

- 
- ✓ **BRAÇOS ANTI-REAÇÃO**
 - ✓ **PANTÓGRAFOS SIMPLES**
 - ✓ **PANTÓGRAFOS COM ENCODERS**
 - ✓ **TELESCÓPICOS DE CARBONO**

100
YEARS OF INNOVATION

Braços Anti-reação

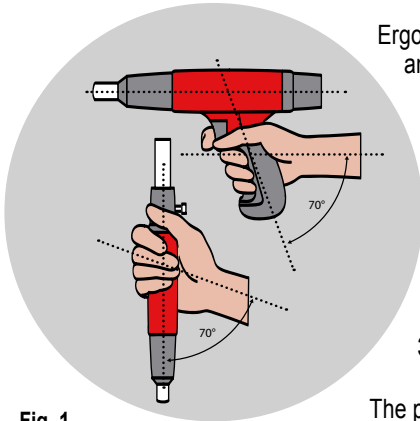


Fig. 1
Holding tools in
an ergonomically
neutral position

Ergonomics deals with the interactions between operators and their work equipment, work environment and work process

Ergonomically designed work systems enhance safety, effectiveness and efficiency, improve human working and living conditions, and counteract adverse effects on human health and performance

Desoutter has been developing products to improve the comfort of use and counter balance some of the below situations:

1. Hand position on the tool: based on application a straight or pistol grip tool is suggested (Fig. 1)
2. Tool position in the workspace: easy to reach and at the right height to minimize the unnecessary movement of the operator (Fig. 2 and 3)
3. Forces exerted: pulling force, torque reaction and the repetitiveness of these forces (Fig. 2 and 3)

The potential benefits of using Desoutter ergonomic accessories together with tools as described in this brochure are:

- Reduce repetitive stress injuries (RSI)
- Reduced operator fatigue
- Greater productivity
- Improved quality
- Reduced handling time
- Greater operator satisfaction
- Lower recruitment costs

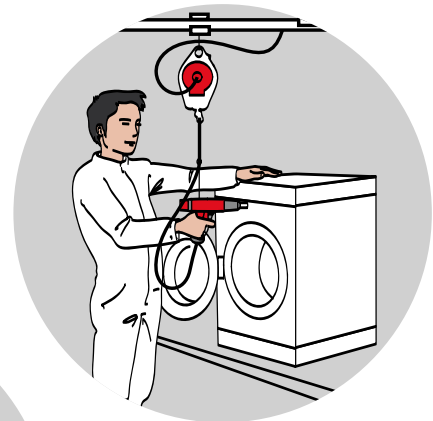


Fig. 2
Desoutter balancer

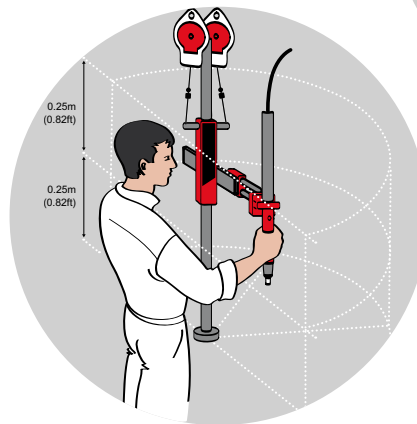
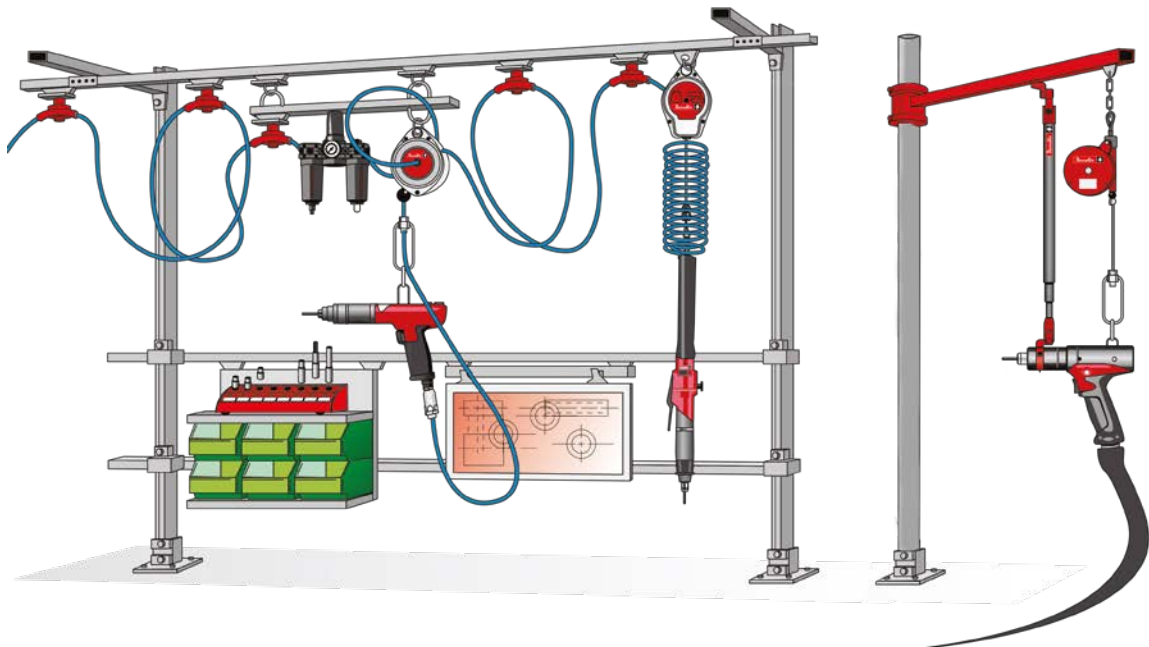
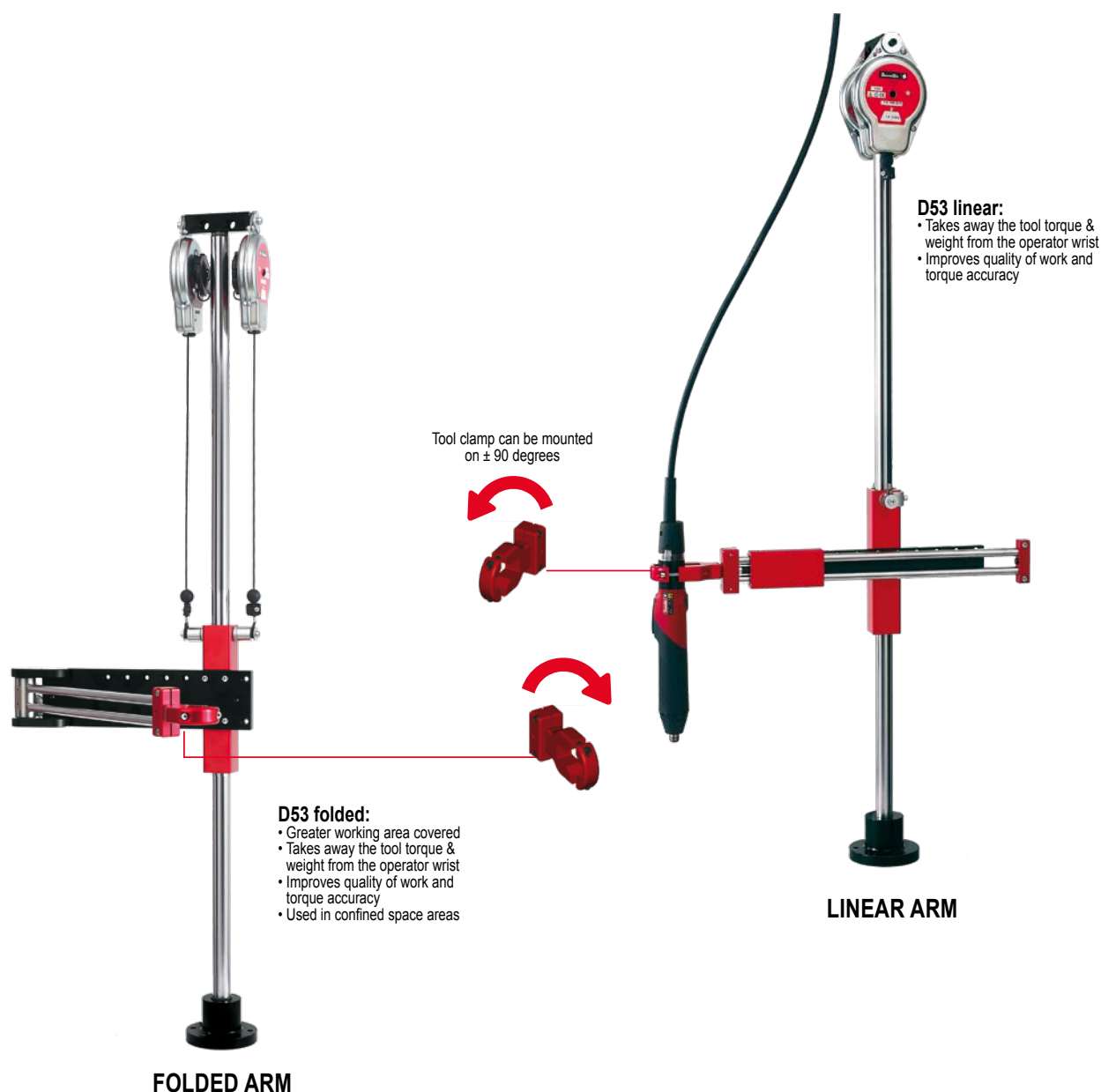


Fig.3
Desoutter torque
reaction arm



Linear and Folded torque reaction arms

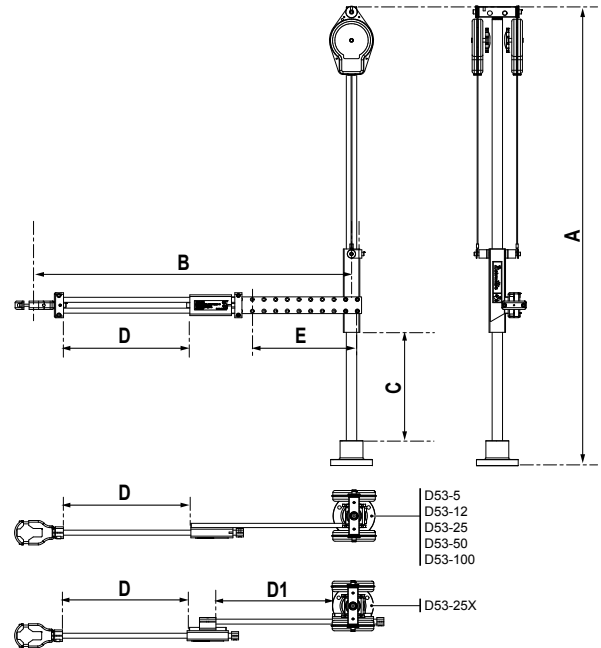
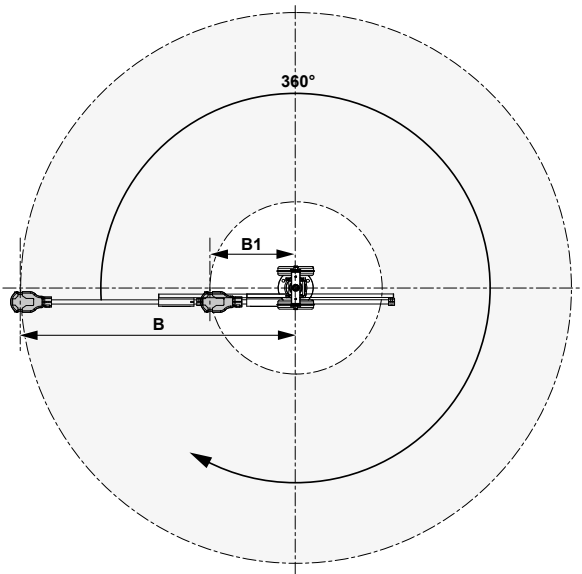


For full tool clamp program, please see details on page 162

MODEL	PART NUMBER	MAXIMUM TORQUE		MAXIMUM TOOL WEIGHT		ARM EQUIPPED WITH	TOOL CLAMP DIAMETER (INCLUDED WITH THE ARM)	
		Nm	ft. lb	kg	lb.		mm	in.
LINEAR ARM								
D53-5*	615 810 700 0	5	3.7	0.8	1.8	1 x 5DU	28.5 - 41	1.12 - 1.62
D53-12*	615 810 701 0	12	8.8	1.5	3.3	2 x 5DU	28.5 - 41	1.12 - 1.62
D53-25*	615 810 702 0	25	18.4	2.5	5.5	2 x 5DU	28.5 - 41	1.12 - 1.62
D53-25X Extended reach*	615 810 703 0	25	18.4	2.2	4.8	2 x 5DU	28.5 - 41	1.12 - 1.62
D53-50	615 810 704 0	50	36.8	5.0	11.0	2 x 15D	To order separately	
D53-100	615 810 705 0	100	73.7	6.0	13.2	2 x 22D		
FOLDED ARM								
D53-5S*	615 810 706 0	5	3.7	0.8	1.8	1 x 5DU	28.5 - 41	1.12 - 1.62
D53-12S*	615 810 707 0	12	8.8	1.5	3.3	2 x 5DU	28.5 - 41	1.12 - 1.62
D53-25S*	615 810 708 0	25	18.4	2.5	5.5	2 x 5DU	28.5 - 41	1.12 - 1.62
D53-50S	615 810 709 0	50	36.8	5.0	11.0	2 x 15D	To order separately	
D53-100S	615 810 710 0	100	73.7	6.0	13.2	2 x 22D		

(*) Universal D53 tool clamp included

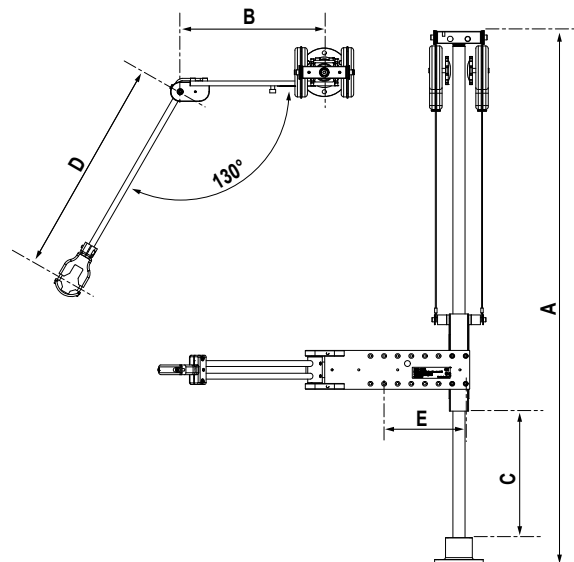
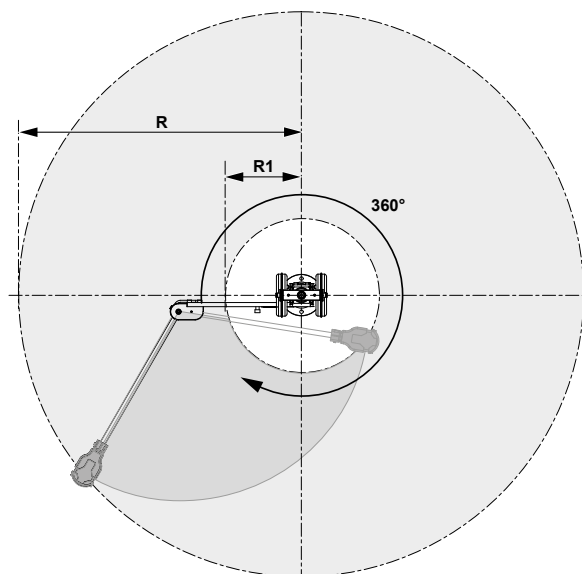
D53 - Dimensions



D53 linear working area product specification

MODEL	PART NUMBER	MAXIMUM TORQUE		HEIGHT A		WIDTH				VERTICAL STROKE C		HORIZONTAL STROKE D		D1	FIXED STROKE E		TOOL WEIGHT MAX	
		Nm	ft. lb	mm	in	MAXI-B	MINI-B	mm	in	mm	in	mm	in		mm	in	kg	lb
D53-5	615 810 700 0	5	3.7	732	28.8	592*	23.3*	220*	8.7*	310	12.2	205	8.1	-	168	6.6	0.8	1.76
D53-12	615 810 701 0	12	8.9	888	35.0	710*	28*	260*	10.2*	465	18.3	255	10.0	-	196	7.7	1.5	3.3
D53-25	615 810 702 0	25	18.4	1132	44.6	779*	30.7*	231*	9.1*	615	24.2	290	11.4	-	252	9.9	2.5	5.5
D53-25X	615 810 703 0	25	18.4	1132	44.6	794*	31.2*	230*	9.0*	615	24.2	290	11.4	275	10.8	-	2.2	4.85
D53-50	615 810 704 0	50	36.9	1147	45.2	888*	35.0*	267**	10.5**	515	20.3	355	14.0	-	266	10.5	5.0	11.0
D53-100	615 810 705 0	100	73.8	1147	45.2	916*	36.0*	255**	10.0**	515	20.3	395	15.6	-	266	10.5	6.0	13.2

(*) With clamp - (**) Without clamp



D53 folded working area product specification

MODEL	PART NUMBER	MAXIMUM TORQUE		HEIGHT A		WIDTH B		VERTICAL STROKE C		RADIUS D		FIXED STROKE E		RADIUS R		RADIUS R1		TOOL WEIGHT MAX	
		Nm	ft. lb	mm	in	mm	in	mm	in	mm	in	mm	in	mm	in	mm	in	kg	lb
D53-5S	615 810 706 0	5	3.7	732	28.8	248	9.76	270	10.6	370*	14.6*	168	6.6	546	21.5	140	5.5	0.8	1.76
D53-12S	615 810 707 0	12	8.9	888	35.0	298	11.73	425	16.7	420*	16.5*	168	6.6	639	25.2	146	5.8	1.5	3.3
D53-25S	615 810 708 0	25	18.4	1132	44.6	296	11.65	580	22.8	470*	18.5*	168	6.6	685	27	183	7.2	2.5	5.5
D53-50S	615 810 709 0	50	36.9	1147	45.2	336	1.1	520	20.5	440**	17.3**	228	9.0	698	27.5	154	6.1	5.0	11.0
D53-100S	615 810 710 0	100	73.8	1147	45.2	391	15.4	500	19.7	490**	19.3**	228	9.0	788	31	158	6.2	6.0	13.2

(*) With clamp - (**) Without clamp

Linear high torque reaction arms



D53-150/1000 linear:

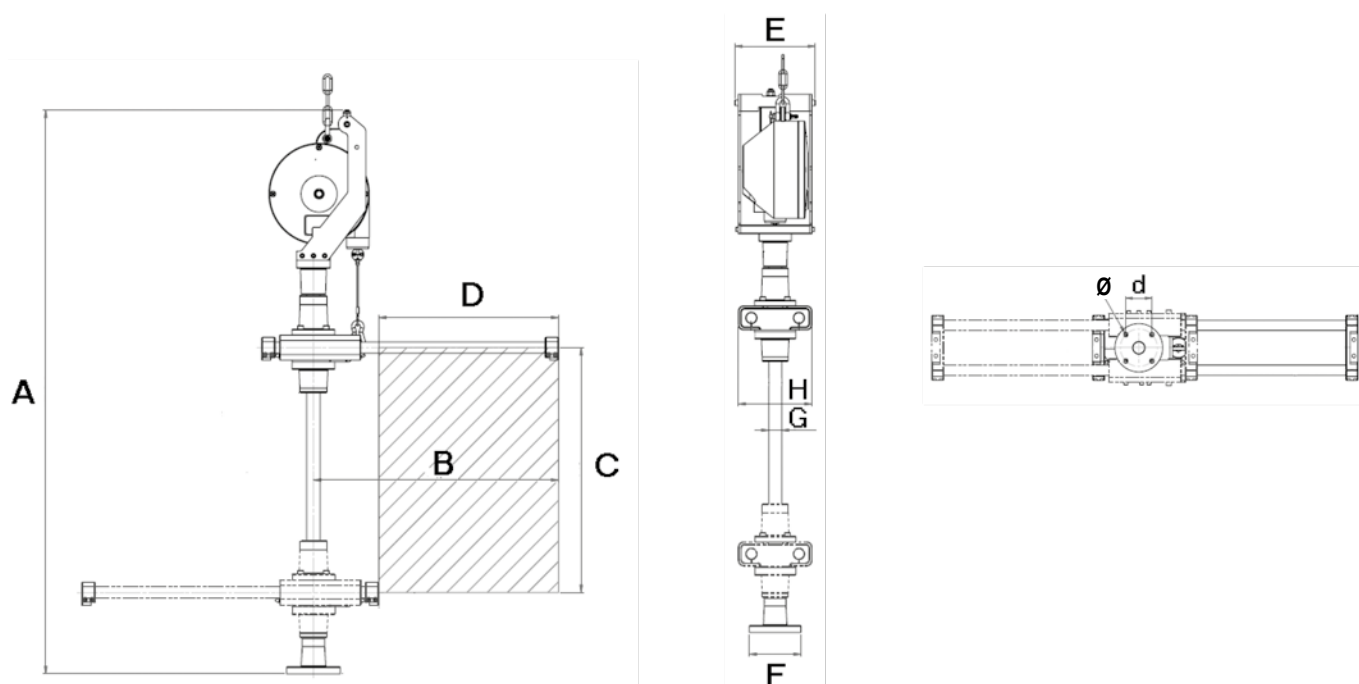
- High torque arms from 150 to 1000Nm (111 to 740 ft.lb)
- Standard and extended versions

MODEL	PART NUMBER	MAXIMUM TORQUE		MAXIMUM TOOL WEIGHT		BALANCER INCLUDED	TOOL CLAMP DIAMETER
		Nm	ft. lb	kg	lb.		
D53-150	615 811 658 0	150	111	7	15.4	1 x 14DF	To order separately contact your Desoutter representatives
D53-150XL	615 811 659 0	150	111	6	13.2	1 x 14DF	
D53-300	615 811 660 0	300	222	14	30.9	1 x 25DF	
D53-300XL	615 811 661 0	300	222	12.5	27.6	1 x 25DF	
D53-500	615 811 662 0	500	370	30	66.2	1 x 45DF	
D53-500XL	615 811 663 0	500	370	27.4	60.4	1 x 45DF	
D53-1000	615 811 664 0	1000	740	21	46.3	1 x 45DF	
D53-1000XL	615 811 665 0	1000	740	17.8	39.3	1 x 45DF	

To order separately
contact your Desoutter
representatives



D53HT - Dimensions



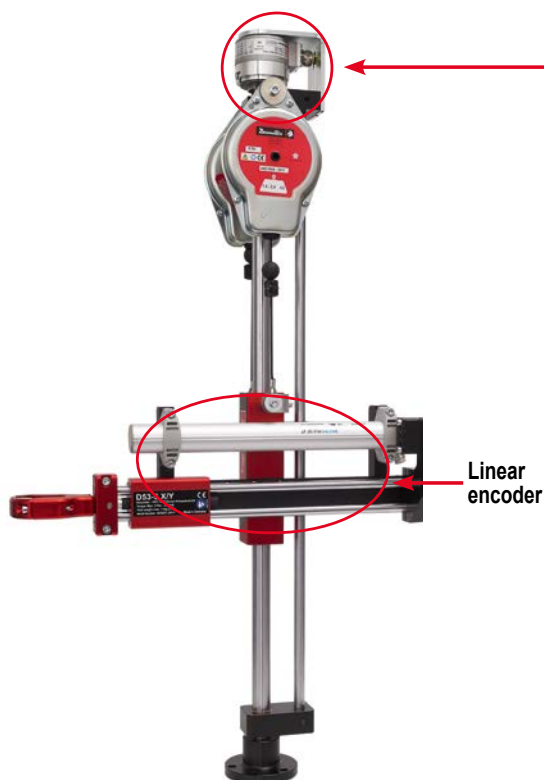
MODEL	PART NUMBER	HEIGHT A		WIDTH (WO/CLAMP)				VERTICAL STROKE				TOOL WEIGHT	
		mm	in	MIN-B	MAX-B	MIN-C	MAX-C	MIN-C	MAX-C	MIN-C	MAX-C	kg	lb
D53-150	615 811 658 0	1049	41.3	240	9.4	600	23.6	154.5	6.1	644	25.4	7	15.4
D53-150XL	615 811 659 0	1159	45.6	240	9.4	840	33.1	154.5	6.1	754	29.7	6	13.2
D53-300	615 811 660 0	1216	47.9	260	10.2	660	26.0	180.0	7.1	720	28.3	14	30.9
D53-300XL	615 811 661 0	1296	51	260	10.2	860	33.9	180.0	7.1	780	30.7	12.5	27.6
D53-500	615 811 662 0	1346	53	290	11.4	730	28.7	209.5	8.2	815	32.1	30	66.2
D53-500XL	615 811 663 0	1561	61.5	290	11.4	1090	42.9	209.5	8.2	1009	39.7	27.4	60.4
D53-1000	615 811 664 0	1556	61.3	320	12.6	800	31.5	278.5	11.0	968	38.1	21	46.3
D53-1000XL	615 811 665 0	1691	66.6	320	12.6	1120	44.1	278.5	11.0	1078	42.5	18	39.3

MODEL	HORIZONTAL STROKE									
	D		E		F		G		H	
	mm	in	mm	in	mm	in	mm	in	mm	in
D53-150	360	14.4	170	6.7	90	3.5	25	1.0	150	5.9
D53-150XL	600	24	170	6.7	90	3.5	25	1.0	150	5.9
D53-300	400	16	186	7.3	119	4.7	30	1.2	170	6.7
D53-300XL	600	24	186	7.3	119	4.7	30	1.2	170	6.7
D53-500	440	17.6	180	7.1	119	4.7	40	1.6	170	6.7
D53-500XL	800	32	180	7.1	119	4.7	40	1.6	170	6.7
D53-1000	480	19.2	182	7.2	129	5.1	50	2.0	220	8.7
D53-1000XL	800	32	182	7.2	129	5.1	50	2.0	220	8.7

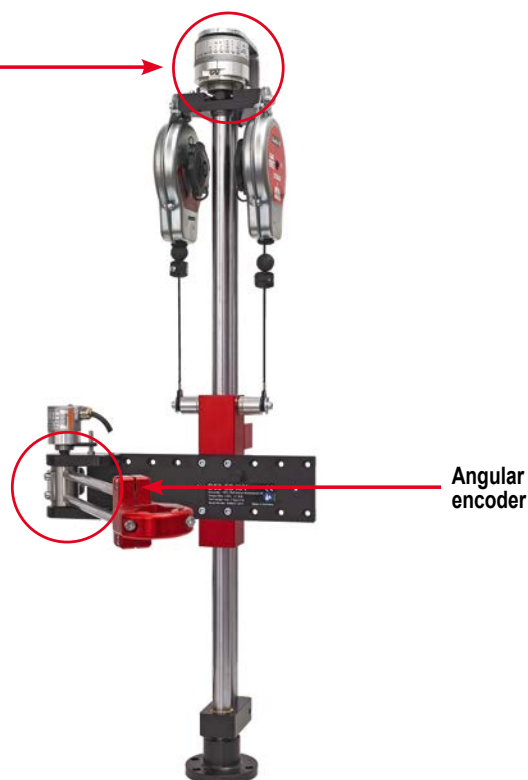
MODEL	D		Ø		ARM WEIGHT	
	mm	in	mm	in	kg	lb
D53-150	50	2.0	11	0.4	12.5	27.6
D53-150XL	50	2.0	11	0.4	13.7	30.2
D53-300	65	2.6	11	0.4	26.7	58.9
D53-300XL	65	2.6	11	0.4	28.2	62.2
D53-500	65	2.6	11	0.4	40.9	90.2
D53-500XL	65	2.6	11	0.4	43.7	96.3
D53-1000	72	2.8	13.5	0.5	57.9	127.7
D53-1000XL	72	2.8	13.5	0.5	61.5	135.7

D53 X/Y - Positioning arms for Posco 500

- D53 X/Y stands allows to track the tool position during assembly process
- Same tool stand as D53 standard one
- 2 different versions with encoders
- This arm is intended to be used together with our POSCO 500 to program a complete fastening sequence
- Linear arm: Linear/Angular/Encoders
- Swivel arm: Angular/Angular/Encoders



LINEAR ARM



FOLDED ARM

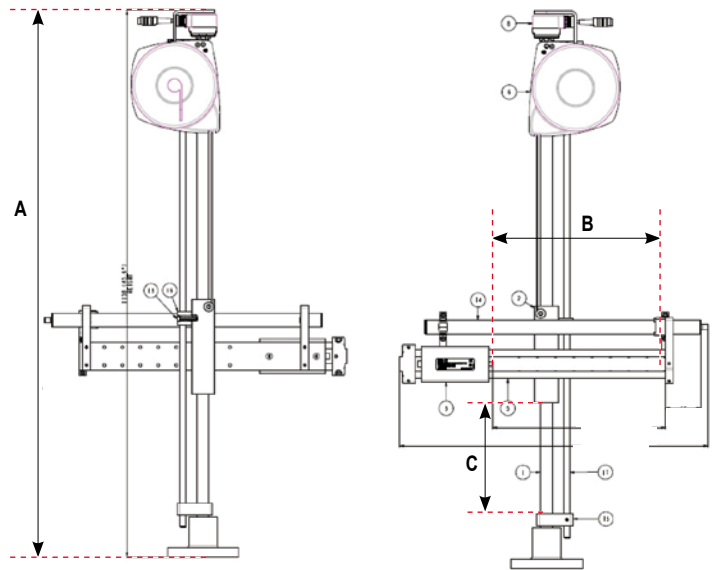
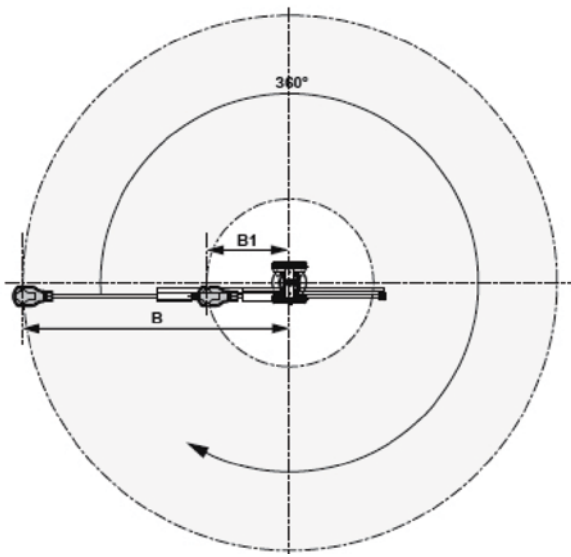
For full tool clamp program, please see details on page 154

MODEL	PART NUMBER	MAXIMUM TORQUE		MAXIMUM TOOL WEIGHT		ARM EQUIPPED WITH	TOOL CLAMP DIAMETER (INCLUDED WITH THE ARM)	
		Nm	ft.lb	kg	lb.		mm	in.
LINEAR ARM								
D53-5 X/Y AXLE*	615 397 874 0	5	3.7	0.8	1.8	1 x 5DU	28.5 - 41	1.12 - 1.62
D53-12 X/Y AXLE*	615 397 875 0	12	8.8	1.5	3.3	2 x 5DU	28.5 - 41	1.12 - 1.62
D53-25 X/Y AXLE*	615 397 876 0	25	18.4	2.5	5.5	2 x 5DU	28.5 - 41	1.12 - 1.62
D53-50 X/Y AXLE*	615 397 877 0	50	36.8	5.0	11.0	2 x 15D	To order separately	
D53-100 X/Y AXLE*	615 397 878 0	100	73.7	6.0	13.2	2 x 22D		
FOLDED ARM								
D53-5S X/Y AXLE*	615 397 879 0	5	3.7	0.8	1.8	1 x 5DU	28.5 - 41	1.12 - 1.62
D53-12S X/Y AXLE*	615 397 880 0	12	8.8	1.5	3.3	2 x 5DU	28.5 - 41	1.12 - 1.62
D53-25S X/Y AXLE*	615 397 881 0	25	18.4	2.5	5.5	2 x 5DU	28.5 - 41	1.12 - 1.62
D53-50S X/Y AXLE	615 397 882 0	50	36.8	5.0	11.0	2 x 15D	To order separately	
D53-100S X/Y AXLE	615 397 883 0	100	73.7	6.0	13.2	2 x 22D		

(*) Universal D53 tool clamp included

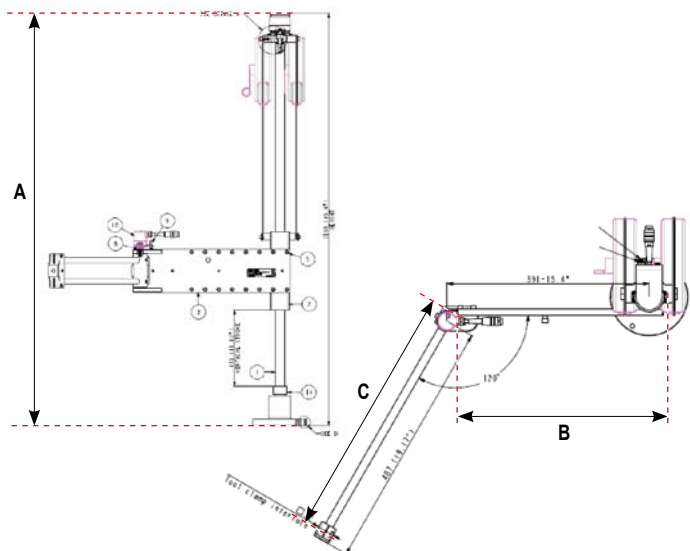
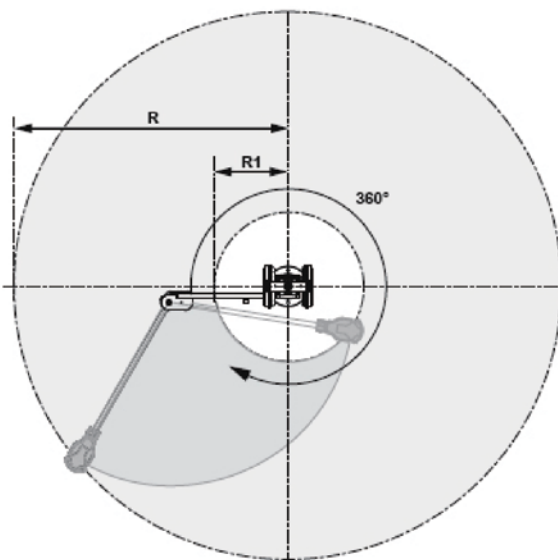


D53 X/Y - Dimensions



Linear arm

MODEL	PART NUMBER	A		B		C	
		mm	in.	mm	in.	mm	in.
D53-5 X/Y-AXLE	615 397 874 0	789	31.1	206.5	8.1	281	11.1
D53-12 X/Y-AXLE	615 397 875 0	945	37.2	238.5	9.4	436	17.2
D53-25 X/Y-AXLE	615 397 876 0	1189	46.8	291.5	11.5	586	23.1
D53-50 X/Y-AXLE	615 397 877 0	1189	46.8	259.5	10.2	486	19.1
D53-100 X/Y-AXLE	615 397 878 0	1189	46.8	398.5	15.7	486	19.1



Folded arm

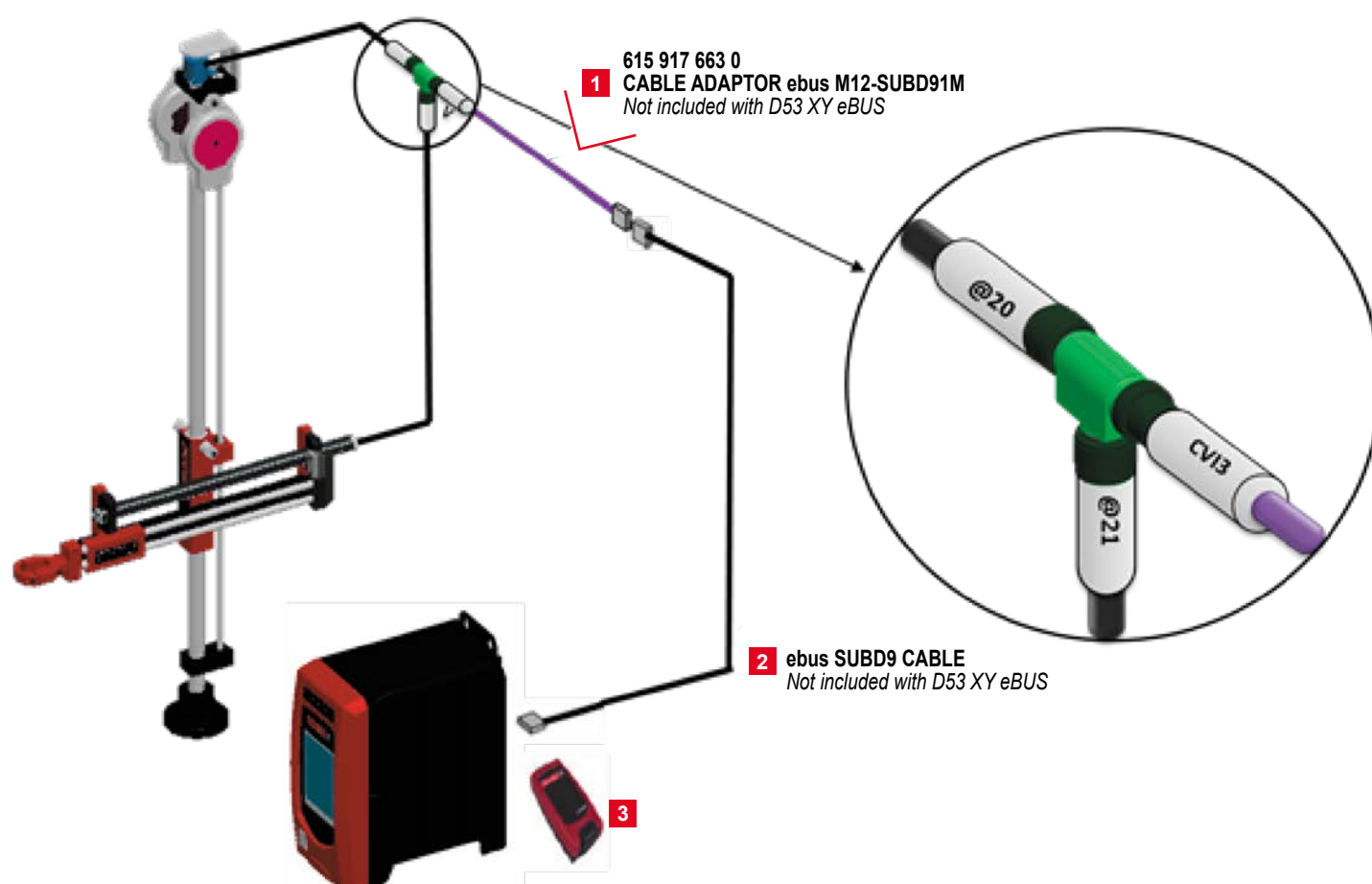
MODEL	PART NUMBER	A		B		C		R		R1	
		mm	in.	mm	in.	mm	in.	mm	in.	mm	in.
D53-5S X/Y AXLE	615 397 879 0	789	31.1	248	9.8	370	14.6	546	21.5	140	5.5
D53-12S X/Y AXLE	615 397 880 0	945	37.2	298	11.7	420	16.5	639	25.2	146	5.8
D53-25S X/Y AXLE	615 397 881 0	1158	45.6	296	11.6	470	18.5	685	27	183	7.2
D53-50S X/Y AXLE	615 397 882 0	1158	45.6	336	13.2	440	17.3	698	27.5	154	6.1
D53-100S X/Y AXLE	615 397 883 0	1158	45.6	391	15.4	490	19.3	788	31	158	6.2

D53 X/Y – Positioning arms for CVI3

- D53 X/Y CANOpen stands allows to track the tool position during assembly process
- Same tool stand as D53 standard one
- 2 different versions with encoders
- This arm is intended to be used together with our CVI3 controller
- Connected directly to the CVI3 controller
- Needs ePOD 2 or higher
- Easy positioning learning mode

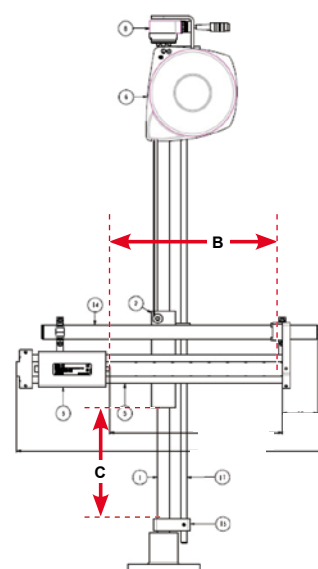
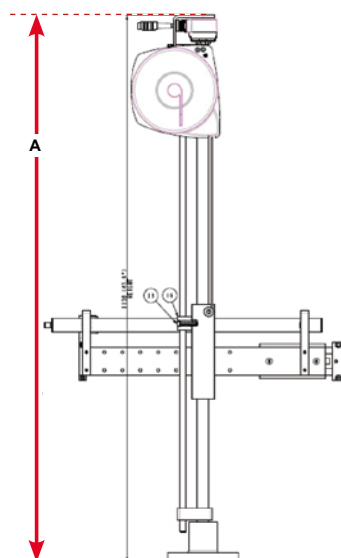
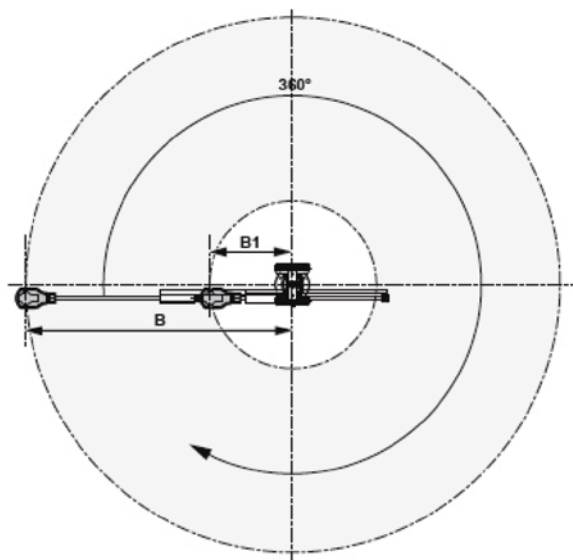
ACCESSORIES NEEDED :

- 1** Cable adaptor EBUS M12 / SUBD9 6159176630
- 2** Select one of them :
 - eBUS SUBD9 cable 3m 6159176220
 - eBUS SUBD9 cable 5m 6159176230
 - eBUS SUBD9 cable 15m 6159176240
- 3** Select one ePOD :
 - ePOD2 6159360760
 - ePOD3 6159360770



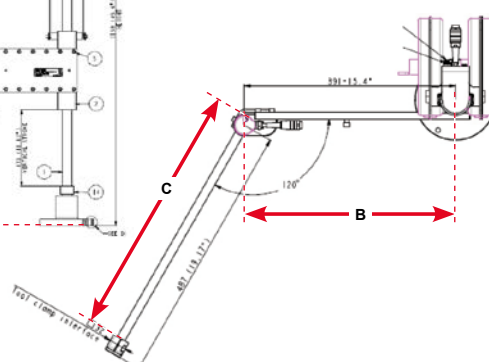
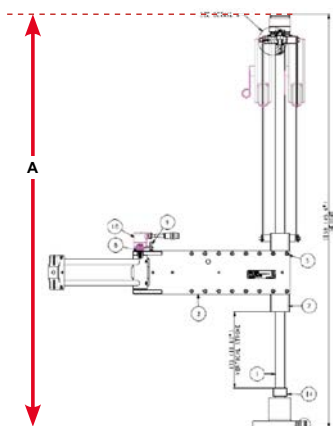
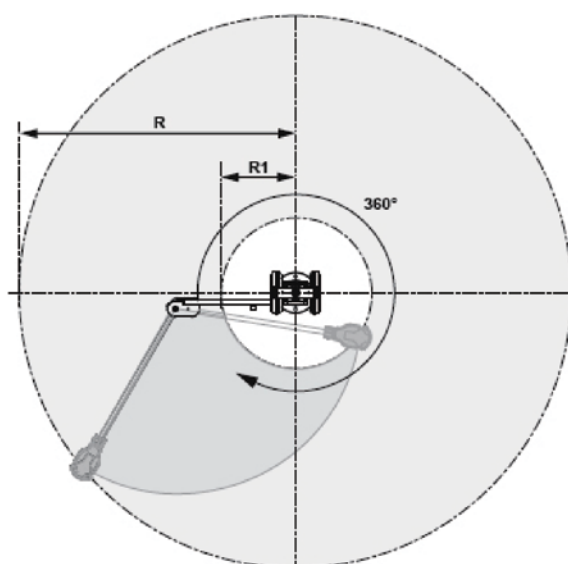
MODEL	PART NUMBER	MAXIMUM TORQUE		MAXIMUM TOOL WEIGHT		ARM EQUIPPED WITH	TOOL CLAMP DIAMETER (INCLUDED WITH THE ARM)	
		Nm	ft. lb	kg	lb.		mm	in.
LINEAR ARM								
D53-5 X/Y-AXLE EBUS	615 812 267 0	5	3.7	0.8	1.8	1 x 5DU	28.5 - 41	1.12 - 1.62
D53-12 X/Y-AXLE EBUS	615 812 268 0	12	8.8	1.5	3.3	2 x 5DU	28.5 - 41	1.12 - 1.62
D53-25 X/Y-AXLE EBUS	615 812 269 0	25	18.4	2.5	5.5	2 x 5DU	28.5 - 41	1.12 - 1.62
D53-50 X/Y-AXLE EBUS	615 812 270 0	50	36.8	5.0	11.0	2 x 15D	To order separately	
D53-100 X/Y-AXLE EBUS	615 812 271 0	100	73.7	6.0	13.2	2 x 22D		
FOLDED ARM								
D53-5S X/Y-AXLE EBUS	615 812 272 0	5	3.7	0.8	1.8	1 x 5DU	28.5 - 41	1.12 - 1.62
D53-12S X/Y-AXLE EBUS	615 812 273 0	12	8.8	1.5	3.3	2 x 5DU	28.5 - 41	1.12 - 1.62
D53-25S X/Y-AXLE EBUS	615 812 274 0	25	18.4	2.5	5.5	2 x 5DU	28.5 - 41	1.12 - 1.62
D53-50S X/Y-AXLE EBUS	615 812 275 0	50	36.8	5.0	11.0	2 x 15D	To order separately	
D53-100S X/Y-AXLE EBUS	615 812 276 0	100	73.7	6.0	13.2	2 x 22D		

D53 X/Y – Positioning arms for CVI3



Linear arm

MODEL	PART NUMBER	A		B		C	
		mm	in.	mm	in.	mm	in.
D53-5 X/Y-AXLE	615 397 874 0	789	31.1	206.5	8.1	281	11.1
D53-12 X/Y-AXLE	615 397 875 0	945	37.2	238.5	9.4	436	17.2
D53-25 X/Y-AXLE	615 397 876 0	1189	46.8	291.5	11.5	586	23.1
D53-50 X/Y-AXLE	615 397 877 0	1189	46.8	259.5	10.2	486	19.1
D53-100 X/Y-AXLE	615 397 878 0	1189	46.8	398.5	15.7	486	19.1

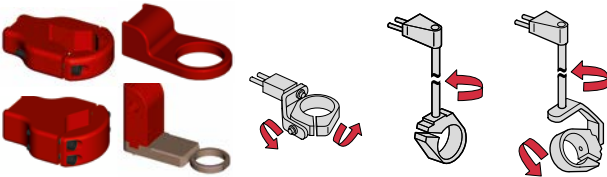


Folded arm

MODEL	PART NUMBER	A		B		C		R		R1	
		mm	in.	mm	in.	mm	in.	mm	in.	mm	in.
D53-5S X/Y AXLE	615 397 879 0	789	31.1	248	9.8	370	14.6	546	21.5	140	5.5
D53-12S X/Y AXLE	615 397 880 0	945	37.2	298	11.7	420	16.5	639	25.2	146	5.8
D53-25S X/Y AXLE	615 397 881 0	1158	45.6	296	11.6	470	18.5	685	27	183	7.2
D53-50S X/Y AXLE	615 397 882 0	1158	45.6	336	13.2	440	17.3	698	27.5	154	6.1
D53-100S X/Y AXLE	615 397 883 0	1158	45.6	391	15.4	490	19.3	788	31	158	6.2

Tool clamp guide for D53 arms

Ordering Process:

SELECT YOUR TOOL	SELECT THE ARM ACCORDING TO: - THE TORQUE APPLICATION - THE REACH NEEDED		ADD THE TOOL CLAMP IF NOT INCLUDED WITH THE ARM				ADD ADAPTORS IF YOU USE ROTATION CLAMPS
STEP 1	STEP 2		STEP 3				STEP 4
TOOL MODEL	D53 MODELS		TOOL CLAMP REFERENCES				COMMENTS
	Linear arms	Swiveling arms	Universal Clamp	Spline	Vertical 2 axis rotation clamp Only for D53-12(S) and D53-25(S)	Horizontal 1 axe rotation clamp Only for D53-12(S) and D53-25(S)	Horizontal 2 axis rotation clamp Only for D53-12(S) and D53-25(S)
							
SB/SBP/SC2/SC/ SCP(T)SH70 SLBN SLC(P) Nose mount ECS/ERS/ECD 5	D53-5* / D53-12* / D53-25* * Tool clamp included	D53-5S* / D53-12S* / D53-25S* * Tool clamp included	615 810 835 0 Included (A) 28.5-41mm		615 396 615 0 + 409083 NOT Included To be ordered	615 396 615 0 + 409113 NOT Included To be ordered	615 396 615 0 + 409173 NOT Included To be ordered
SD/SDP/SDT ERP 3/5/10/20 ECP 3/5/10/20	D53-5* / D53-12* / D53-25* * Tool clamp included	D53-5S* / D53-12S* / D53-25S* * Tool clamp included	615 810 835 0 Included (A) 28.5-41mm		615 396 615 0 + 409093 NOT Included To be ordered	615 396 615 0 + 409123 NOT Included To be ordered	615 396 615 0 + 409183 NOT Included To be ordered
SLC Top mount	D53-5 / D53-12	D53-5S D53-12S	615 810 838 0 NOT Included To be ordered (B) 40-50 mm		615 396 615 0 + 409093 NOT Included To be ordered	615 396 615 0 + 409123 NOT Included To be ordered	615 396 615 0 + 409183 NOT Included To be ordered
ECA 15/20/30	D53-5 D53-12 D53-25	D53-5S D53-12S D53-25S	615 810 838 0 NOT Included To be ordered (B) 40-50 mm				
SH 150/200/280/420/500 SH 700/850 ERP 30/40 ERAL1.5/2 ECS/ERS	D53-25(X) D53-50 D53-100	D53-25S(X) D53-50S D53-100S	615 811 029 0 NOT Included To be ordered (B) 28-55 mm				
ERDL 4 ECD 50/70/120	D53-50 / D53-100	D53-50S D53-100S	615 810 203 0 NOT Included To be ordered (C)				
EID 44-1200 EID 75-900 EID 65-800	D53-50 / D53-100	D53-50S D53-100S	615 812 136 0 NOT Included To be ordered (C)				
ERDL 6	D53-100	D53-100S	615 810 205 0 NOT Included To be ordered (C)				
ECD20/30	D53-25(X) D53-50	D53-25S(X) D53-50S	615 810 628 0 + 615 396 191 0 NOT Included To be ordered (D)				Parts to be welded
ERAL 4-90/110/120 ERAL 6-135 ECA 70... 150	D53-100	D53-100S	615 810 628 0 + 615 396 227 0 NOT Included To be ordered (D)				Parts to be welded
EID25-1200 EID 32-900 EDP/ERDL 1.5/2	D53-50	D53-50S	615 810 628 0 + 615 396 551 5 NOT Included To be ordered (D)				Parts to be welded

For the tools not mentioned in this list, please ask your local Desoutter contact to define the tool clamp.

Tool clamps



A



B



C



D



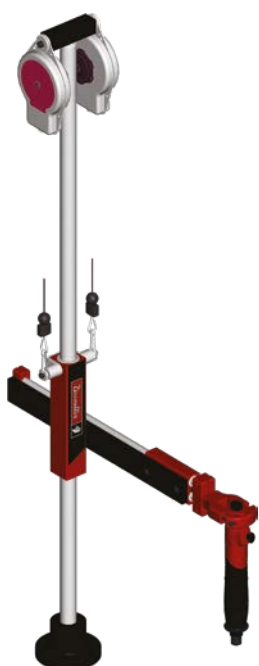
E

Specific Clamps

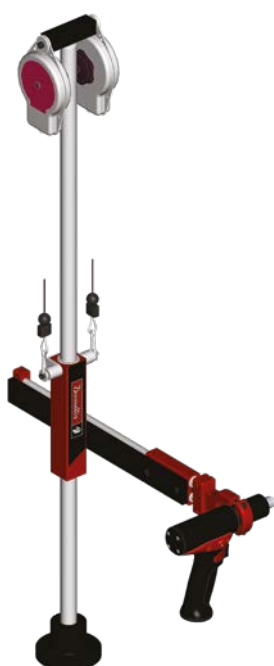
MODEL E	PART NUMBER
SB	615 810 123 0
SC2 / SBP / SCP(T) / SLB / ECS / SLC(P) SDP(T)	615 810 125 0
SD SH70/150/200/280 /420/500	615 810 129 0
SH700/850	615 810 131 0

D53 Tool positioning

Straight tool



Pistol grip tool



Angle nutrunner



TRA - Telescopic reaction arms

Telescopic carbon arm: Ideal for busy workspace!

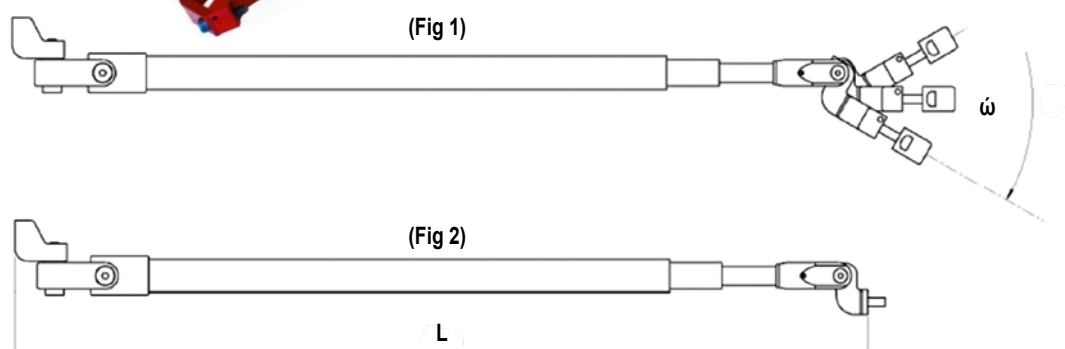
- From 12 up to 200 Nm (8.9 up to 148 ft.lb) torque capacity
- Several lengths available
- 90 degrees tool clamp interface for straight or pistol grip tools
- Limited tool clamp angle rotation to avoid side forces in the operator arm (ω) (Fig 1)

Benefits:

- Extremely lightweight carbon made torque arm for improved comfort of use
- Flexible solution



Need to order a balancer separately see page 174



** Universal balancer adapter

OPTIONAL ACCESSORIES

ITEM	DESCRIPTION	PART NUMBER
A	Bench stand Ø 32mm (1.26") - H 753mm (29.64")	615 810 194 0
B	Bench stand holder Ø 32mm (1.26") for TRA 12/25	615 810 121 0
B	Bench stand holder Ø 32mm (1.26") for TRA 50/100	615 810 140 0
C	Universal balancer adapter	615 397 922 5

MODEL	PART NUMBER	MAXIMUM TORQUE		MAX. MIN LENGTH L		ω (DEG)	WEIGHT		TOOL CLAMP DIAMETER (INCLUDED WITH THE ARM)	
		Nm	ft. lb	mm	in.		kg	lb	mm	in.
TRA12 1150*	615 810 089 0	12	8.9	516-1128	20-44	170	0.46	1.01	28-49	1.10-1.92
TRA12 1600*	615 810 090 0	12	8.9	666-1578	26-62	170	0.51	1.12	28-49	1.10-1.92
TRA12 2100*	615 810 091 0	12	8.9	835-2083	32-82	170	0.57	1.26	28-49	1.10-1.92
TRA25 1150*	615 810 092 0	25	18.4	524-1124	20-44	170	0.60	1.32	28-49	1.10-1.92
TRA25 1600*	615 810 093 0	25	18.4	674-1574	26-62	170	0.70	1.54	28-49	1.10-1.92
TRA25 2100*	615 810 094 0	25	18.4	841-2075	33-82	170	0.77	1.70	28-49	1.10-1.92
TRA25 2600*	615 810 095 0	25	18.4	1007-2573	39-101	170	0.86	1.89	28-49	1.10-1.92
TRA50 1600*	615 810 096 0	50	36.9	712-1624	28-64	40	1.14	2.51	28-50	1.10-1.97
TRA50 2100*	615 810 097 0	50	36.9	878-2125	34-84	40	1.24	2.73	28-50	1.10-1.97
TRA50 2600*	615 810 098 0	50	36.9	1045-2626	41-103	40	1.34	2.95	28-50	1.10-1.97
TRA100 1600	615 810 099 0	100	73.8	722-1628	28-64	30	1.47	3.24	To order separately (see page 168)	
TRA100 2100	615 810 100 0	100	73.8	889-2129	35-83	30	1.41	3.11		
TRA100 2600	615 810 101 0	100	73.8	1056-2630	41-103	30	1.53	3.37		
TRA200 1600	615 810 102 0	200	148	726-1628	28-64	20	1.98	4.36		
TRA200 2100	615 810 103 0	200	148	893-2129	35-84	20	2.18	4.80		
TRA200 2600	615 810 104 0	200	148	1060-2630	41-103	20	2.39	5.27		

(*) Universal TRA tool clamp included (**) Universal balancer adapters: 1 kit = 7 parts for all Desoutter balancer types: Part No. 615 397 922 5

TRA - Positionning telescopic arms for Posco 500

TRA with positioning system allows to track the tool position during the assembly process

Same telescopic arm as the standard one: from 12 to 200 Nm (8.9 to 148 ft.lb) torque capacity

2 different versions:

- 1 encoder: length measurement
- 2 encoders: length measurement + angle control
- This arm is intended to be used together with our POSCO 500 to program a complete fastening sequence
- Accuracy: +/- 5mm

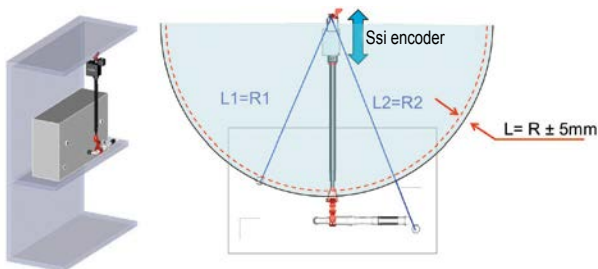


Need to order a balancer separately See page 174

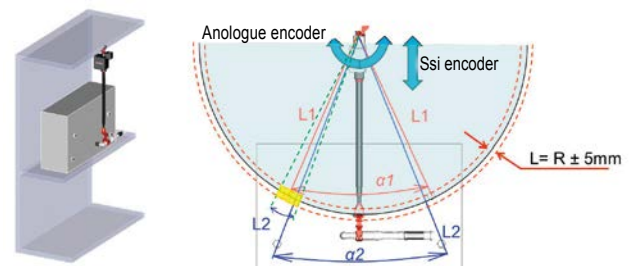


**Universal balancer adapter

1 encoder system



2 encoders system



MODEL	PART NUMBER	NUMBER OF ENCODER	MAXIMUM TORQUE		MAX. MIN. LENGTH		TOOL CLAMP DIAMETER	
			Nm	ft.lb	mm	in.	mm	in.
TRA 12 1600 UNI P *	615 811 694 0	1	12	8.8	1762	69	28 - 49	1.10 - 1.92
TRA 25 2100 UNI P *	615 811 670 0	1	25	18.4	2259	89	28 - 49	1.10 - 1.92
TRA 50 2100 UNI P *	615 811 676 0	1	50	36.8	2311	91	28 - 49	1.10 - 1.92
TRA 100 2100 P	615 811 682 0	1	100	73.7	2315	91	To be ordered separately (page166)	
TRA 200 2100 P	615 811 688 0	1	200	147.4	2317	91		
TRA 12 1600 UNI P2 *	615 811 695 0	2	12	8.8	1762	69	28 - 49	1.10 - 1.92
TRA 25 2100 UNI P2 *	615 811 671 0	2	25	18.4	2259	89	28 - 49	1.10 - 1.92
TRA 50 2100 UNI P2 *	615 811 677 0	2	50	36.8	2311	91	28 - 49	1.10 - 1.92
TRA 100 2100 P2	615 811 683 0	2	100	73.7	2315	91	To be ordered separately (page166)	
TRA 200 2100 P2	615 811 689 0	2	200	147.4	2317	91		

(*) Universal TRA tool clamp included

(**) Universal balancer adapters: 1 kit = 7 parts for all Desoutter balancer types. Part Nr. 615 397 922 5

TRA X/Y – Positionning arms for CVI3

Same telescopic arms as the standard one: up to 200Nm (148 ft.lb.) torque capacity

- TRA X/Y CANopen arms allows to track the tool position during assembly process
- 2 different versions:
 - 1 encoder: length measurement
 - 2 encoders: length measurement + angle control
- This arm is intended to be used together with our CVI3 controller
- Accuracy: +/- 5mm
- Connected directly to the CVI3 controller
- Needs ePOD 2 or higher
- Easy positioning learning mode

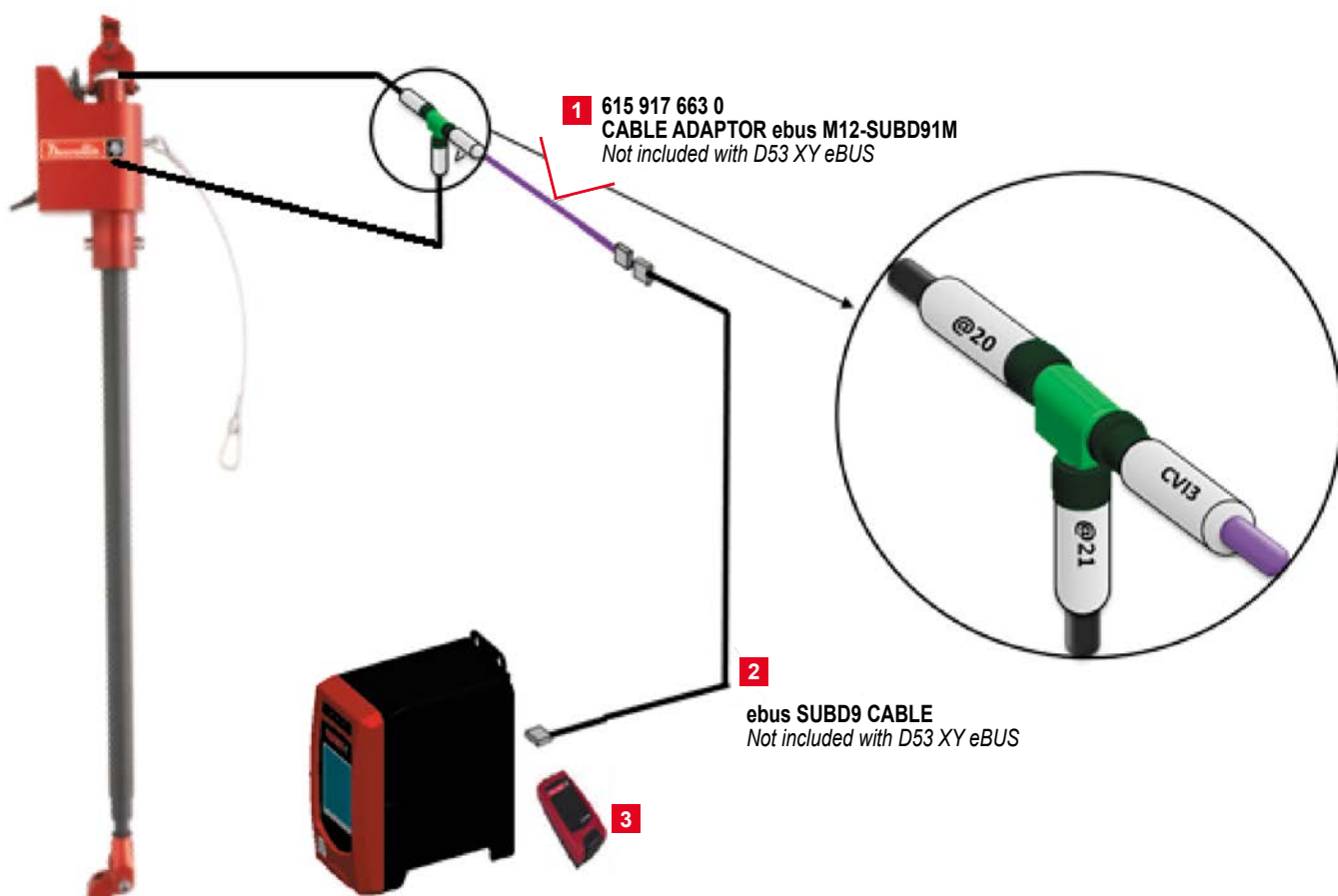
ACCESSORIES NEEDED :

- 1** Cable adaptor EBUS M12 / SUBD9 6159176630
- 2** Select one of them :

eBUS SUBD9 cable 3m	6159176220
eBUS SUBD9 cable 5m	6159176230
eBUS SUBD9 cable 15m	6159176240
- 3** Select one ePOD :

ePOD2	6159360760
ePOD3	6159360770

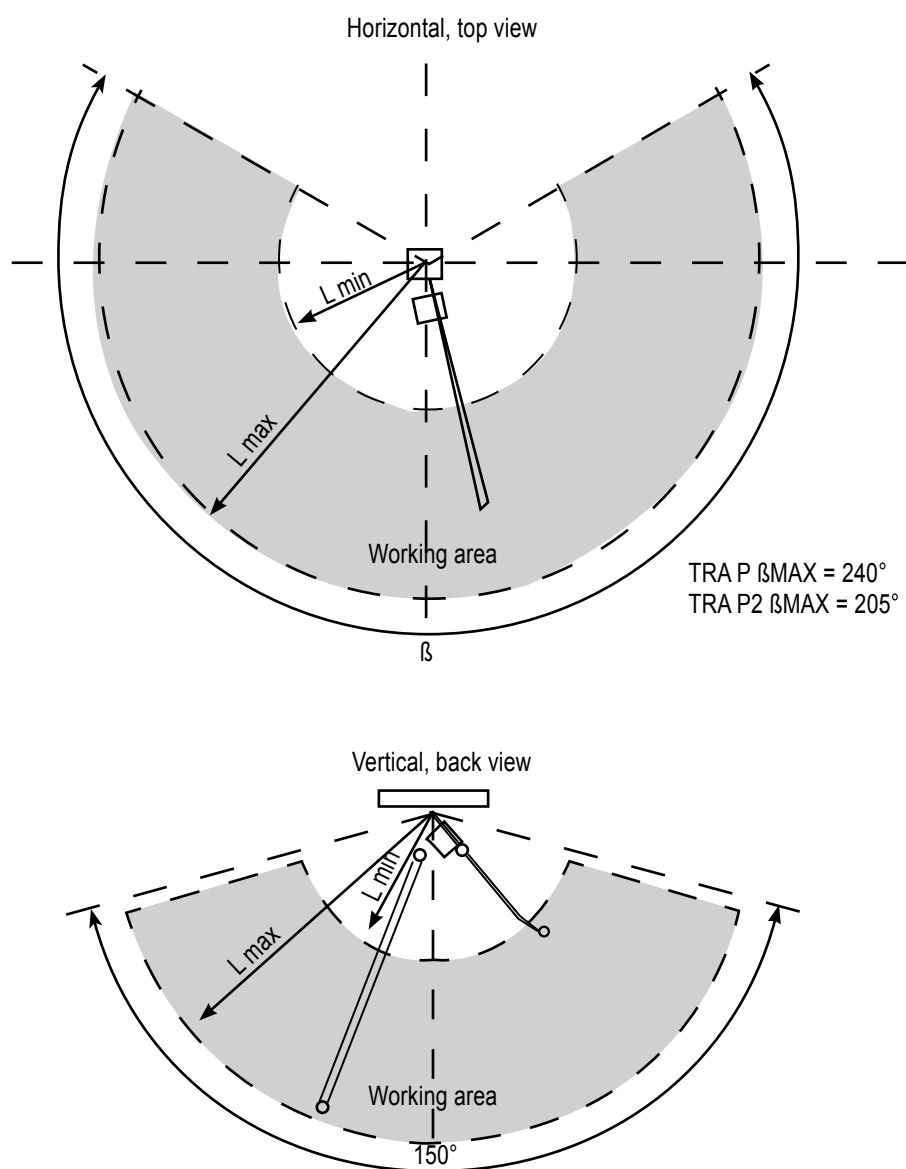
 - Needs ePOD 2 or higher
 - Easy positioning learning mode



TRA X/Y – Positionning arms for CVI3











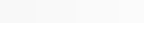
MODEL	PART NUMBER	TORQUE MAX		L MIN		L MAX		STROKE		WEIGHT	
		Nm	Ft.lb	mm	in	mm	in	mm	in	kg	lb
TRA 12 1600 P UNI	615 812 102 0	12	8.9	883.5	34.78	1762	69.4	887.5	34.6	4	8.8
TRA 25 2100 P UNI	615 812 103 0	25	18.4	1053.5	41.47	2259	88.9	1205.5	47.5	4.2	9.3
TRA 50 2100 P UNI	615 812 104 0	50	36.9	1105	43.5	2311	91	1206	47.5	4.6	10.1
TRA 100 2100 UNI	615 812 105 0	100	73.8	1080	42.5	2315	91.15	1235	48.6	4.8	10.6
TRA 200 2100 P UNI	615 812 106 0	200	148	1085	42.7	2317	91.2	1232	48.5	6.4	14.1
TRA 12 1600 P2	615 812 107 0	12	8.9	883.5	34.78	1762	69.4	887.5	34.6	4.2	9.3
TRA 25 2100 P2	615 812 108 0	25	18.4	1053.5	41.47	2259	88.9	1205.5	47.5	4.4	9.7
TRA 50 2100 P2	615 812 109 0	50	36.9	1105	43.5	2311	91	1206	47.5	4.8	10.6
TRA 100 2100 P2	615 812 110 0	100	73.8	1080	42.5	2315	91.15	1235	48.6	5	11
TRA 200 2100 P2	615 812 111 0	200	148	1085	42.7	2317	91.2	1232	48.5	6.8	15

TRA X/Y CANopen - Dimensions



The new clamps guide for TRA

Ordering Process:

SELECT YOUR TOOL		SELECT THE ARM ACCORDING TO: - THE TORQUE APPLICATION - THE REACH NEEDED		ADD THE TOOL CLAMP. IF NOT INCLUDED WITH THE ARM	
STEP 1	STEP 2	STEP 3			
TOOL MODEL	TRA MODEL	TOOL CLAMP REFERENCE	DESCRIPTION	PHOTO	
SB/SBP SC2/SCP/SCPT SD/SDP/SDT SH 70/150/200/280 SLBN/SLC/SLCP ECS ERP 3/5/10/20 ECD 5	TRA12* / 25 * * Clamp included with the arm	615 810 118 0 Included with the arm	Universal Clamp 28 - 49mm (1.1 - 1.92")	A	
ERP 30/40 ERDL 1,5/2 ERAL 4-90	TRA50* / 100 * Clamp included with the arm	6158101370 Included with TRA50. To be ordered for TRA100	Universal Clamp 28 - 50mm (1.1 - 1.97")	B	
SH 420/500	TRA50 TRA100	6158129030 + 6158128940 6158129040 + 6158128940		C	
SH 700	TRA50 TRA100	6158129030 + 6158129000 6158129040 + 6158129000		C	
SH 850	TRA 100	6158128940 + 6158128970		C	
ERAL 1,5/2	TRA50, TRA100	6158129030 + 615812890 6158129040 + 615812890		C	
ERAL 4	TRA50	6158129030 + 6158128960		C	
ECA 15/20/30	TRA 50	6158129030 + 6158128930		C	
ECA 40/60	TRA 100	6158129040 + 6158128930		C	
EAD 20/32 EAB(C) 26/32/45	TRA50	6158129030 + 6158128880		C	
EAD 50-900	TRA50 TRA100	6158129030 + 6158128910 6158129040 + 6158128910		C	
EAD 70/80/105 EAB(C) 60	TRA50 TRA100	6158129030 + 6158128950 6158129040 + 6158128950		C	
ERDL 4 - 60/80/135 ECD 50/70/120 EID 44/65/75	TRA100 TRA200	6158102030 for TRA100 6158102020 for TRA200 NOT Included with the arm To be ordered	Spline G1 D40,5	D	
ERDL 6 - 170/220/250	TRA200	6158102040 NOT Included with the arm To be ordered	Spline G1 D50	D	
EDP EID 25/32	TRA 50	6158106280 + 6153965515 NOT Included with the arm To be ordered	Clamp to be welded	E	
ECD 20/30	TRA 50	6158106280 + 6153961910 NOT Included with the arm To be ordered	Clamp to be welded	E	
ECA 70/90/115/125/150	TRA 100	6158129040 + 6158128980		C	
ERAL 4 - 225 ECA 200	TRA200	6158106310 + 6153962300 NOT Included with the arm To be ordered	Clamp to be welded	E	

For the tools not mentioned in this list, please ask your local Desoutter contact to define the tool clamp

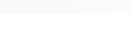
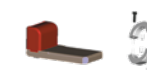
A

B

C

D

E



Torque Tubes



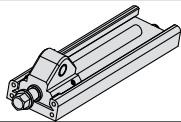
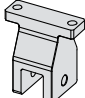

Telescopic arm for vertical and horizontal fastening applications

- From 0 to 100 Nm (0 to 73.7ft.lb) torque capacity
- Different strokes available
- Designed to be used with all Desoutter tools
- Gravity center adjustment and rigid fixation as options



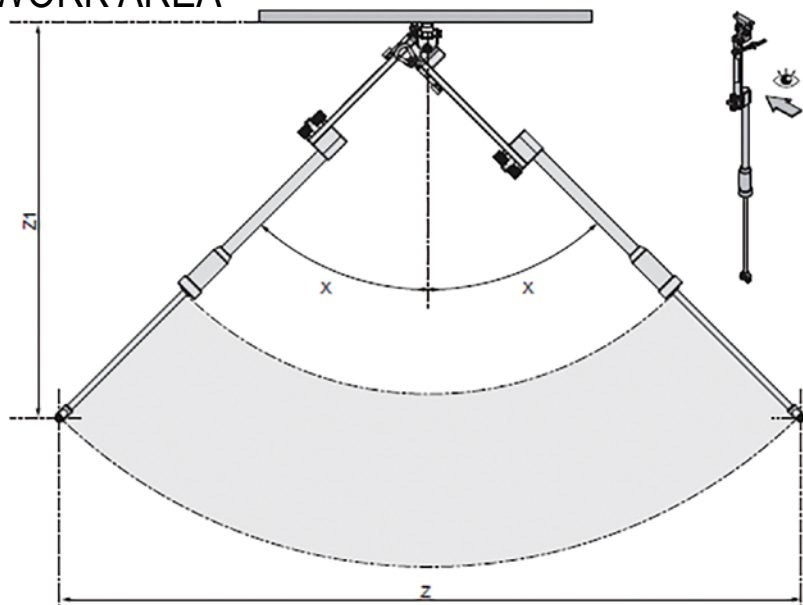
MODEL	PART NUMBER	MAX TORQUE		STROKE		WEIGHT	
		Nm	ft lb	mm	in	kg	lb
TT10-850/300	615 812 260 0	12	8.9	300	11.8	1.4	3.1
TT25-1150/300	615 812 082 0	25	18.4	300	11.8	3.5	7.8
TT25-1600/600	615 812 261 0	25	18.4	600	23.6	3.9	8.7
TT50-1700/600	615 812 262 0	50	36.9	600	23.6	5.3	11.7
TT50-2100/900	615 812 263 0	50	36.9	900	35.4	6.3	13.8
TT100-1700/600	615 812 264 0	100	73.7	600	23.6	8.6	18.9
TT100-2100/900	615 812 265 0	100	73.7	900	35.4	10	22

OPTIONAL ACCESSORIES

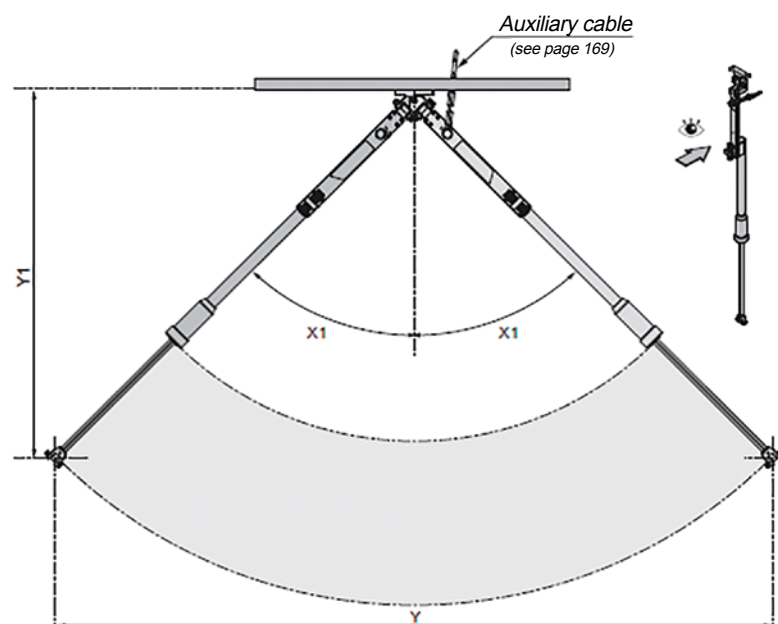
PART NUMBER	DESCRIPTION	FOR TORQUE TUBE	
615 812 203 0	Gravity center adjustment	TT10	
615 812 149 0	Gravity center adjustment	TT25	
615 812 532 0	Gravity center adjustment	TT50	
615 812 539 0	Gravity center adjustment	TT100	
615 812 211 0	Rigid fixation	TT10	
615 812 157 0	Rigid fixation	TT25	
615 812 535 0	Rigid fixation	TT50 / 100	
615 812 141 0	Balancer DU fixation	TT10 / 25	
615 812 145 0	Balancer D fixation	TT25/50	
615 812 522 0	Balancer DF fixation	TT50 / 100	

Torque Tubes

WORK AREA



MODEL	PART NUMBER	X	Z MAX ± 5		Z1 MAX ± 5	
		Deg	mm	in	kg	lb
TT10-850/300	615 812 260 0	45	1378	54.25	723.8	28.5
TT25-1150/300	615 812 082 0	45	1508.4	59.39	819	32.2
TT25-1600/600	615 812 261 0	45	2356.9	92.8	1243.3	48.9
TT50-1700/600	615 812 262 0	45	2552	100.5	1362	53.6
TT50-2100/900	615 812 263 0	45	340.3	13.4	1786.45	70.3
TT100-1700/600	615 812 264 0	45	2583.1	101.7	1377.67	54.2
TT100-2100/900	615 812 265 0	45	3431.6	135.1	1801.94	70.9



MODEL	PART NUMBER	X	Y MAX ± 5		Y1 MAX ± 5	
		Deg	mm	in	kg	lb
TT10-850/300	615 812 260 0	45	1403.5	55.3	721.9	28.42
TT25-1150/300	615 812 082 0	45	1562.1	61.5	807.8	31.8
TT25-1600/600	615 812 261 0	45	2410.6	94.9	1232	48.5
TT50-1700/600	615 812 262 0	45	2626.8	103.4	1342.6	52.9
TT50-2100/900	615 812 263 0	45	3475.4	136.8	1766.9	69.6
TT100-1700/600	615 812 264 0	45	2657.1	104.6	1357.6	53.4
TT100-2100/900	615 812 265 0	45	3505.6	138.0	1781.8	70.2

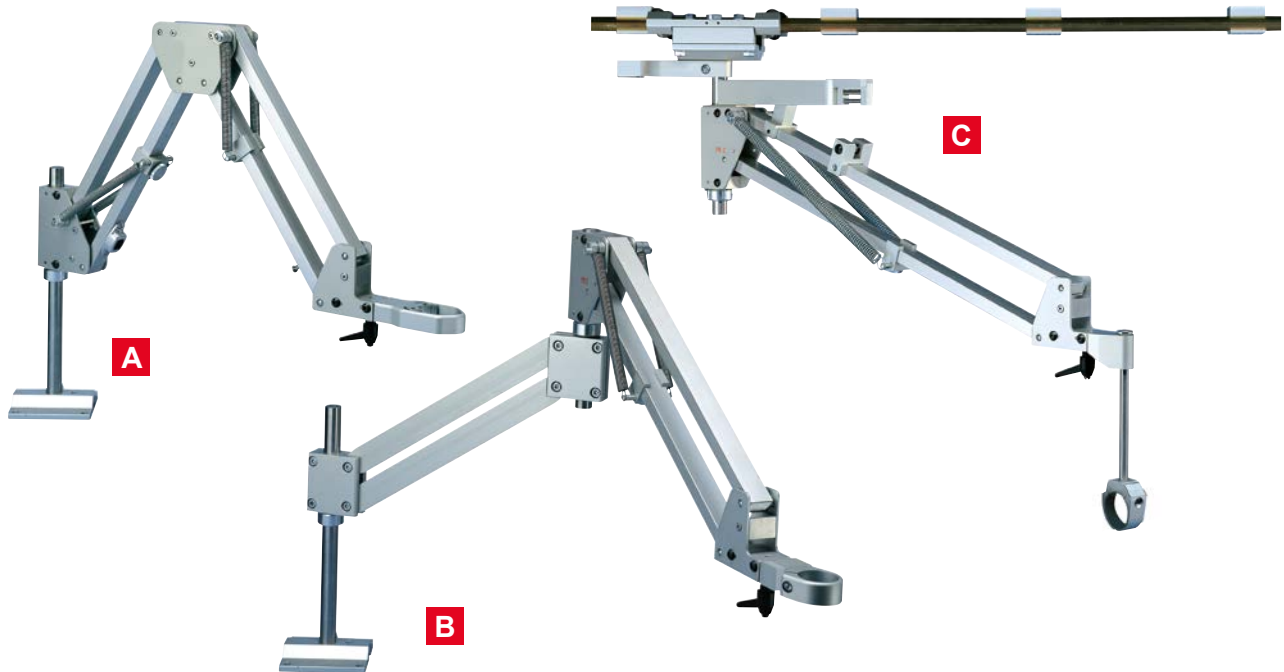


Tool clamp guide for TT arms

Ordering Process:

SELECT YOUR TOOL	SELECT THE ARM ACCORDING TO: - THE TORQUE APPLICATION - THE REACH NEEDED	ADD THE TOOL CLAMP		ADD THE BALANCER KIT + BALANCER		ADD OPTIONS IF NEEDED
STEP 1 TOOL MODEL	STEP 2 TT MODEL	TOOL CLAMP REFERENCE	PICTURE	STEP 4 BALANCER KIT AND BALANCER REFERENCES		STEP 5 OPTIONS
SB, SC2, SD, SLC, ECD5 ECS(A-F), ERS(A-F) ERDL 1.5-12, SLBN	TT10 : 6158122600	6158122150	A	6158121410 Balancer DU fixation	4DU: 50532 / 4DU: 50532 5DU: 50542 / 4DU: 50532 5DU: 50542 / 5DU: 50542 5DU: 50542 / 5DU: 50542 5DU: 50542	Gravity center adjustment: 6158122030 Rigid fixation : 6158122110
SD 070/072, SLCP	TT10 : 6158122600	6158122180		6158121410 Balancer DU fixation	5DU: 50542	Gravity center adjustment: 6158122030 Rigid fixation : 6158122110
SH 70/150	TT25 1160/300 : 6158120820 TT25 1600/600 : 6158122610	6158122200		6158121450 Balancer D fixation	10D: 50052	Gravity center adjustment: 6158121490 Rigid fixation : 6158121570
ECS (A-F), ERS (A-F) ECD30, SLBN 120 SD 130/140/160/220	TT25 1160/300 : 6158120820 TT25 1600/600 : 6158122610	6158121610	A	6158121450 Balancer D fixation	10D: 50052	Gravity center adjustment: 6158121490 Rigid fixation : 6158121570
EID 25	TT25 1160/300 : 6158120820 TT25 1600/600 : 6158122610	6158121950		6158121450 Balancer D fixation	10D: 50052	Gravity center adjustment: 6158121490 Rigid fixation : 6158121570
ECD20, ERDL	TT25 1160/300 : 6158120820 TT25 1600/600 : 6158122610	6158121960		6158121450 Balancer D fixation	10D: 50052	Gravity center adjustment: 6158121490 Rigid fixation : 6158121570"
EFDE43-8/15	TT25 1160/300 : 6158120820 TT25 1600/600 : 6158122610	6158121980		6158121450 Balancer D fixation	15D: 50062	Gravity center adjustment: 6158121490 Rigid fixation : 6158121570
MC35-20, MC38-10 EME35-20J, EME38-10J	TT25 1160/300 : 6158120820 TT25 1600/600 : 6158122610	6158121970		6158121450 Balancer D fixation	15D: 50062	Gravity center adjustment: 6158121490 Rigid fixation : 6158121570
SH 200/280	TT25 1160/300 : 6158120820 TT25 1600/600 : 6158122610	6158121990		6158121450 Balancer D fixation	10D: 50052	Gravity center adjustment: 6158121490 Rigid fixation : 6158121570
EAD20, EAB® 15/26 ERAL 2-30/40, SDP 209/300 SH 150/280	TT25 1160/300 : 6158120820 TT25 1600/600 : 6158122610	6158122000		6158121450 Balancer D fixation	10D: 50052	Gravity center adjustment: 6158121490 Rigid fixation : 6158121570
ECA 15/20/30 ERAL 1,5-15/25/35	TT25 1160/300 : 6158120820 TT25 1600/600 : 6158122610	6158122010		6158121450 Balancer D fixation	10D: 50052	Gravity center adjustment: 6158121490 Rigid fixation : 6158121570
ERSA 12	TT25 1160/300 : 6158120820 TT25 1600/600 : 6158122610	6158122020		6158121450 Balancer D fixation	10D: 50052	Gravity center adjustment: 6158121490 Rigid fixation : 6158121570
ERDL 1,5/2, ECD 30	TT50 1700/600 : 6158122620 TT50 2100/900 : 6158122630	6158125750		6158121450 Balancer D fixation	22D: 50072	Gravity center adjustment: 6158125320 Rigid fixation : 6158125350
EAB(C) 26/32/45, EAD 20/32	TT50 1700/600 : 6158122620 TT50 2100/900 : 6158122630	6158129030 + 6158128880		6158121450 Balancer D fixation	22D: 50072 15D: 50062	Gravity center adjustment: 6158125320 Rigid fixation : 6158125350
ECA 20/30/40/60	TT50 1700/600 : 6158122620 TT50 2100/900 : 6158122630	6158129030 + 6158128930		6158121450 Balancer D fixation	22D: 50072	Gravity center adjustment: 6158125320 Rigid fixation : 6158125350
SH 420/500	TT50 1700/600 : 6158122620 TT50 2100/900 : 6158122630*	6158129030 + 6158128940		6158121450 Balancer D fixation	22D: 50072	Gravity center adjustment: 6158125320 Rigid fixation : 6158125350
EFDE(S) 43-30/45 EME 51-70, MC 51-10/20	TT50 1700/600 : 6158122620 TT50 2100/900 : 6158122630	6158125420		6158125220 Balancer DF fixation	14DF: 6158050140 for TT100 2100	Gravity center adjustment: 6158125320 Rigid fixation : 6158125350
EID 25/32/44	TT50 1700/600 : 6158122620 TT50 2100/900 : 6158122630	6158125740 + 6158129010		6158121450 Balancer D fixation	22D: 50072	Gravity center adjustment: 6158125390 Rigid fixation : 6158125350
ERDL 1,5-30 ERDL 2-40/50	TT50 1700/600 : 6158122620 TT50 2100/900 : 6158122630	6158125740 + 6158129020		6158121450 Balancer D fixation	22D: 50072	Gravity center adjustment: 6158125390 Rigid fixation : 6158125350
ERAL 2-60/80	TT50 1700/600 : 6158122620 TT50 2100/900 : 6158122630	6158129030 + 6158128890		6158121450 Balancer D fixation	22D: 50072	Gravity center adjustment: 6158125320 Rigid fixation : 6158125350
	TT100 1700/600 : 6158122640 TT100 2100/900 : 6158122650	6158129040 + 6158128890		6158121450 Balancer D fixation	22D: 50072	Gravity center adjustment: 6158125390 Rigid fixation : 6158125350
SH 700	TT50 1700/600 : 6158122620 TT50 2100/900 : 6158122630	6158129030 + 6158128900		6158121450 Balancer D fixation	22D: 50072	Gravity center adjustment: 6158125320 Rigid fixation : 6158125350
	TT100 1700/600 : 6158122640 TT100 2100/900 : 6158122650	6158129040 + 6158128900		6158121450 Balancer D fixation	22D: 50072	Gravity center adjustment: 6158125390 Rigid fixation : 6158125350
EAB(C,A) 50 EAD 50	TT50 1700/600 : 6158122620 TT50 2100/900 : 6158122630	6158129030 + 6158128910		6158121450 Balancer D fixation	22D: 50072	Gravity center adjustment: 6158125320 Rigid fixation : 6158125350
	TT100 1700/600 : 6158122640 TT100 2100/900 : 6158122650	6158129040 + 6158128910		6158121450 Balancer D fixation	22D: 50072	Gravity center adjustment: 6158125390 Rigid fixation : 6158125350
EAB(C) 60	TT50 1700/600 : 6158122620 TT50 2100/900 : 6158122630	6158129030 + 6158128920		6158121450 Balancer D fixation	22D: 50072	Gravity center adjustment: 6158125320 Rigid fixation : 6158125350
	TT100 1700/600 : 6158122640 TT100 2100/900 : 6158122650	6158129040 + 6158128920		6158121450 Balancer D fixation 6158125220 Balancer DF fixation for TT100 2100	22D: 50072 14DF: 6158050140 for TT100 2100	Gravity center adjustment: 6158125390 Rigid fixation : 6158125350
ERAL 4-90/110/120	TT100 1700/600 : 6158122640 TT100 2100/900 : 6158122650	6158129040 + 6158128960		6158121450 Balancer D fixation 6158125220 Balancer DF fixation for TT100 2100	22D: 50072 14DF: 6158050140 for TT100 2100	Gravity center adjustment: 6158125390 Rigid fixation : 6158125350
SH 850	TT100 1700/600 : 6158122640 TT100 2100/900 : 6158122650	6158129040 + 6158128970		6158121450 Balancer D fixation 6158125220 Balancer DF fixation for TT100 2100	22D: 50072 14DF: 6158050140 for TT100 2100	Gravity center adjustment: 6158125390 Rigid fixation : 6158125350
ECA 70/90/115/125/150	TT100 1700/600 : 6158122640 TT100 2100/900 : 6158122650	6158129040 + 6158128980		6158121450 Balancer D fixation 6158125220 Balancer DF fixation for TT100 2100	22D: 50072 14DF: 6158050140 for TT100 2100	Gravity center adjustment: 6158125390 Rigid fixation : 6158125350
ECA 70/90/115	TT100 1700/600 : 6158122640 TT100 2100/900 : 6158122650	6158129040 + 6158128980		6158121450 Balancer D fixation 6158125220 Balancer DF fixation for TT100 2100	22D: 50072 14DF: 6158050140 for TT100 2100	Gravity center adjustment: 6158125390 Rigid fixation : 6158125350
ECA 125/150	TT100 1700/600 : 6158122640 TT100 2100/900 : 6158122650	6158129040 + 6158128980		6158125220 Balancer DF fixation	14DF: 6158050140 for TT100 2100	Gravity center adjustment: 6158125390 Rigid fixation : 6158125350
EAD 70/80/105	TT100 1700/600 : 6158122640 TT100 2100/900 : 6158122650	6158129040 + 6158128950		6158125220 Balancer DF fixation	14DF: 6158050140 for TT100 2100	Gravity center adjustment: 6158125390 Rigid fixation : 6158125350"
EID 65/75	TT100 1700/600 : 6158122640 TT100 2100/900 : 6158122650	6158125770 + 6158129000		6158125220 Balancer DF fixation	14DF: 6158050140 for TT100 1700 / 17DF: 6158050150 for TT100 2100	Gravity center adjustment: 6158125390 Rigid fixation : 6158125350
EFDE(S) 51-70	TT100 1700/600 : 6158122640 TT100 2100/900 : 6158122650	6158125760		6158125220 Balancer DF fixation	17DF: 6158050150 for TT100 1700 / 21DF: 6158050160 for TT100 2100	Gravity center adjustment: 6158125390 Rigid fixation : 6158125350"
EFDE 43-30/45 , MC 51-10/20 EME 51-10J/20J, EME 60-10	TT100 1700/600 : 6158122640 TT100 2100/900 : 6158122650	6158125760		6158125220 Balancer DF fixation	14DF: 6158050140 for TT100 1700/ 17DF: 6158050150 for TT100 2100	Gravity center adjustment: 6158125390 Rigid fixation : 6158125350

Balancing arms D57, D58, D59

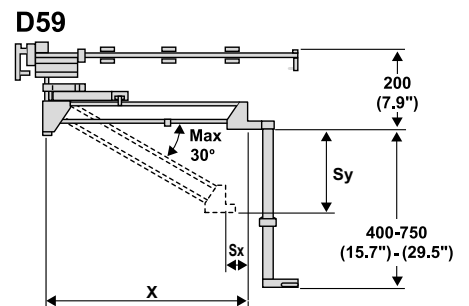
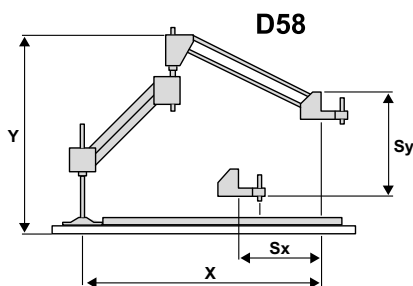
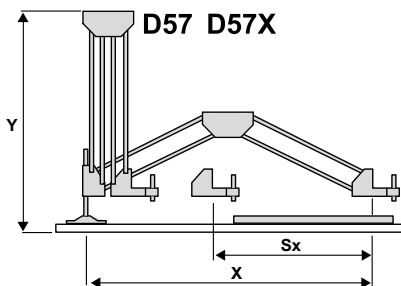
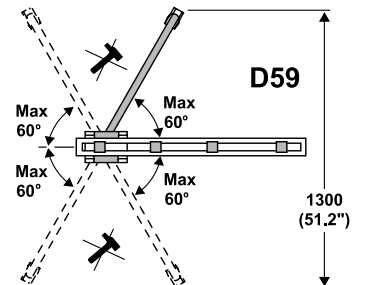


D57/D57X/D58 How To Order

1. Basic Stand
2. Tool Holder
3. Optional Accessories

D59 How To Order

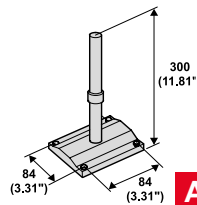
1. Basic Stand
2. Tool Holder
3. Rail (supplied per meter, e.g. for 3m order (3) of PN. 409213)
4. Rail End Stops (2 required per complete rail)
5. Optional Accessories



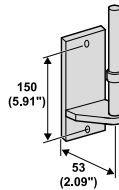
D57 / 58 / 59 BALANCING ARMS

PIC REF.	MODEL	PART NUMBER	MAXIMUM TORQUE		OVERALL HORIZONTAL (X)		OVERALL VERTICAL (Y)		STROKE HORIZONTAL (Sx)		STROKE VERTICAL (Sy)		TOOL WEIGHT CAPACITY		ACCESSORIES INCLUDED
			N.m	ft.lb	mm	in.	mm	in.	mm	in.	mm	in.	kg	lb	
A	D57	408903	20	14.75	700	25.55	550	21.6	510	20.7	95	3.74	2	4.4	BENCH MOUNT
A	D57X	408913	20	14.75	850	33.46	550	21.6	610	24.0	95	3.74	2	4.4	BENCH MOUNT
B	D58	408923	20	14.75	710	27.95	600	23.6	600	23.6	180	7.08	2	4.4	BENCH MOUNT
C	D59	408933	20	14.75	650	25.60	200	7.87	70	2.75	250	9.84	2	4.4	RAIL CARRIAGE

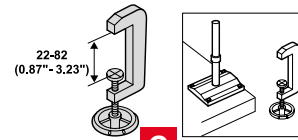
Tool clamps



A



B

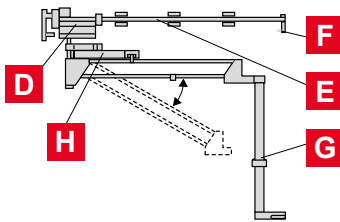


C

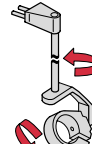
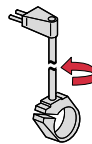
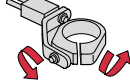
ACCESSORIES

ITEM	PART NO.	DESCRIPTION	D57 / D57X	D58	D59
A	408953	Bench Mount (Included with the stand)	✓	✓	
B	408963	Wall Mount Bracket	✓	✓	
C	408973	Table Stand Clamp	✓	✓	
•	408993	Heavy Duty Spring 1 - 2,5 kg	✓		
D	409253	Rail Carriage (Included with the stand)			✓
E	409213	Rail Per Meter			✓
F	409223	Rail End Stops			✓
G	409203	Telescopic Height Adjustments			✓
H	409233	Top Arrestor / Vertical Lock			✓
H	409243	Side Arrestor / Horizontal Lock			✓

must also order top arrestor when using side arrestor



D57/58/59 TOOL CLAMPS	Ø28.5-41MM	Ø40-50MM	VERTICAL 2 AXIS ROTATION	HORIZONTAL SINGLE AXIS ROTATION	HORIZONTAL 2 AXIS ROTATION	ADAPTOR SLEEVE BLANK (supplied as standard with tool holders) to be machined to suit the tool
PART NO.	615 396 6140	615 396 6290	409083 Ø36mm (1.42) 409093 Ø46mm (1.8) 409103 Ø56mm (2.2)	409113 Ø36mm (1.42) 409123 Ø46mm (1.8) 409133 Ø56mm (2.2)	409173 Ø36mm (1.42) 409183 Ø46mm (1.8)	409273 Ø46mm (1.8) (OUTSIDE) Ø30mm (1.18) (INSIDE) 409023 Ø56mm (2.2) (OUTSIDE) Ø40mm (1.57) (INSIDE)



Pneumatic Screwdrivers



SB / SBP	✓		409083	409113	409173	
SC2 / SCP / SCPT	✓		409083	409113	409173	
SD / SDP	✓		409093	409123	409183	Ring adaptor PN 409273 for SD
SH70 / SH150	✓		409093	409123	409183	

Electric Screwdrivers



SLBN	✓		409093	409123	409183	Ring adaptor PN 409273
SLC (nose mount)	✓		409083	409113	409173	
SLC (top mount)		✓	409093	409123	409183	
ECS	✓		409083	409113	409173	
ECD5	✓		409083	409113	409173	
ERD5	✓		409083	409113	409173	

Drills

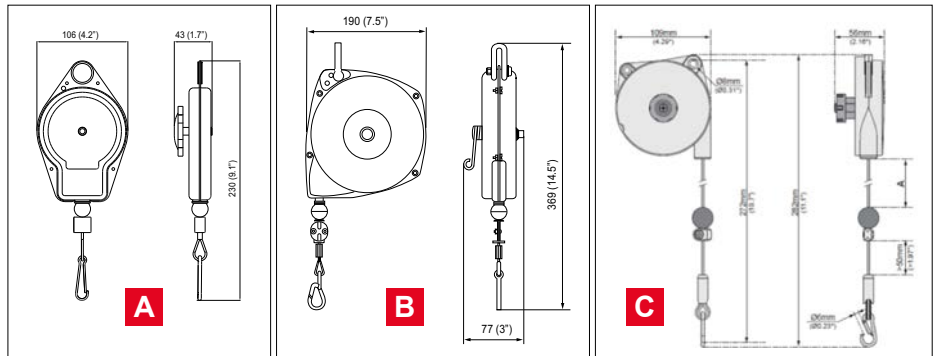


DR 300	✓		409083	409113	409173	
DR 350				409113	409173	
DR 750				409123	409183	Ring adaptor PN 409273

Balancers D, HU & R Series



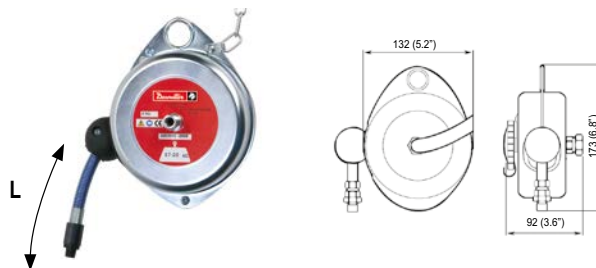
- Steel housing
- Nylon (pic A) Steel (pic B,C) cable
- Additional support chain included
- 10S / 15S / 22S with drum lock feature: operates only on spring failure



BALANCERS - 1DU - 22S

PIC REF	MODEL	PART NUMBER	LOAD RANGE				CABLE TRAVEL		WEIGHT	
			MIN. CAPACITY		MAX. CAPACITY					
			kg	lb	kg	lb	m	ft	kg	lb
A	1DU	52542	0	0	0.5	1.1	1.5	4.9	0.6	1.3
	2DU	50522	0.5	1.1	1.0	2.2	1.5	4.9	0.6	1.3
	2DUS	54532	0.5	1.1	1.0	2.2	3.0	9.8	0.6	1.3
	3DU	52862	1.0	2.2	1.5	3.3	1.5	4.9	0.6	1.3
	4DU	50532	1.0	2.2	2.0	4.4	1.5	4.9	0.6	1.3
	5DU	50542	1.4	3.1	2.4	5.3	1.5	4.9	0.6	1.3
B	10D	50052	2.5	5.5	5.0	11.0	2.4	7.8	2.7	6.0
	15D	50062	5.0	11.0	7.0	15.4	2.4	7.8	3.2	7.1
	22D	50072	6.0	13.2	10.0	22.0	2.4	7.8	3.2	7.1
	10S*	50572	2.0	4.4	5.0	11.0	2.4	7.8	2.7	6.0
	15S*	50582	5.0	11.0	7.0	15.4	2.4	7.8	3.2	7.1
	22S*	50592	6.0	13.2	10.0	22.0	2.4	7.8	3.2	7.1
C	2DSB	615 812 791 0	0.4	0.88	1	2.2	1.6	63	0.57	1.25
	2DSBX	615 812 794 0	0.4	0.88	1	2.2	3	118.11	0.57	1.25
	4DSB	615 812 792 0	1	2.2	2	4.4	1.6	63	0.6	1.32

* Balancers with drum lock features



- Steel housing
- Additional support chain included
- Polyurethane hose
- 1/4" thread

HOSE BALANCERS - 1HU - 4HU

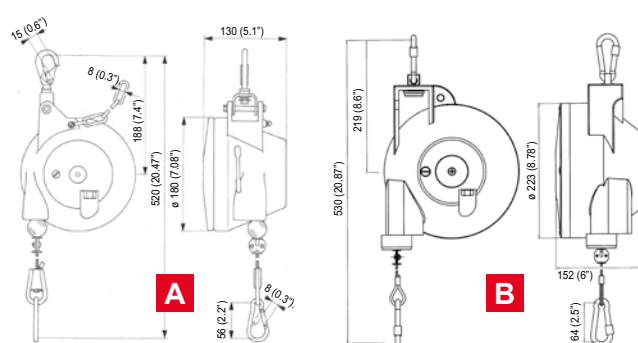
MODEL	PART NUMBER	LOAD RANGE				HOSE TRAVEL		HOSE ID		WEIGHT	
		MIN. CAPACITY		MAX. CAPACITY							
		kg	lb	kg	lb	m	ft	mm	in.	kg	lb
1HU	52552	0	0	0.5	1.1	1.5	4.9	6.5	1/4	1.2	2.6
3HU	50552	0.5	1.1	1.4	3.1	1.0	3.3	6.5	1/4	1.2	2.6
4HU	50562	0.7	1.5	2.0	4.4	1.0	3.3	6.5	1/4	3.3	7.3
4HU-X*	205 148 128 4	0.7	1.5	2.0	4.4	1.0	3.3	6.5	1/4	3.3	7.3

Flow rate: 7.1 l/s (15cfm) - *L= 0.5

Balancers - DF & DFL Series



- Reaction free: holds the load weightless throughout the entire cable length
- Rigid and impact-resistant plastic and aluminum housing
- 360° swiveling safety hook for isolated suspension
- Screw-type safety hook for load suspension
- Standard safety chain
- Spring fracture safeguard, integrated drum lock



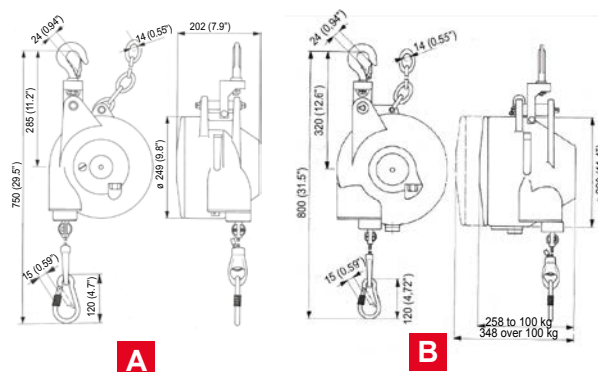
BALANCERS - 5DF - 55 DF

PIC REF	MODEL	PART NUMBER	LOAD RANGE				CABLE TRAVEL		WEIGHT	
			MIN. CAPACITY		MAX. CAPACITY		m	ft	kg	lb
			kg	lb	kg	lb				
A	12ZG	6 158 130 77 0	0,4	0.88	1,2	2.65	1,6	5.25	1.3	2.87
	26ZG	6 158 130 78 0	1,2	2.65	2,6	5.73	1,6	5.25	1.4	3.09
	38ZG	6 158 130 79 0	2,6	5.73	3,8	8.38	1,6	5.25	1.5	3.31
	52ZG	6 158 130 80 0	3,8	8.38	5,2	11.46	1,6	5.25	1.5	3.31
	65ZG	6 158 130 81 0	5,2	11.46	6,5	14.33	1,6	5.25	1.5	3.31
	5DF	615 805 011 0	3.0	6.6	5.0	11.0	2.0	6.6	2.9	6.4
	7DF	615 805 012 0	4.5	9.9	7.0	15.4	2.0	6.6	3.1	6.8
	10DF	615 805 013 0	6.0	13.2	10.0	22.0	2.0	6.6	3.2	7.1
	14DF	615 805 014 0	9.0	19.8	14.0	30.9	2.0	6.6	3.4	7.5
	17DF	615 805 015 0	13.0	28.7	17.0	37.5	2.0	6.6	3.6	7.9
B	21DF	615 805 016 0	16.0	35.3	21.0	46.3	2.0	6.6	3.8	8.4
	25DF	615 805 017 0	15.0	33.1	25.0	55.1	2.0	6.6	7.8	17.2
	35DF	615 805 018 0	25.0	55.1	35.0	77.2	2.0	6.6	8.9	16.6
	45DF	615 805 019 0	35.0	77.2	45.0	99.2	2.0	6.6	9.5	20.9
	55DF	615 805 020 0	45.0	99.2	55.0	121.2	2.0	6.6	9.7	21.4

A Plastic housing B Aluminum housing



- Reaction free: holds the load weightless throughout the entire cable length
- Rigid and impact-resistant aluminum housing
- 360° swiveling safety hook
- Cable extension limit stop for overload protection
- Screw-type safety hook for load suspension
- Standard safety chain
- Standard spring fracture safeguard integrated drum lock
- Ferrule for securing cable end
- Freewheel device for protection against handling errors



BALANCERS - 20DFL - 200DFL

PIC REF	MODEL	PART NUMBER	LOAD RANGE				CABLE TRAVEL		WEIGHT	
			MIN. CAPACITY		MAX. CAPACITY		m	ft	kg	lb
			kg	lb	kg	lb				
A	20DFL	615 805 021 0	12	26.5	20	44.1	2.0	6.6	14.8	32.6
	30DFL	615 805 022 0	20	44.1	30	66.1	2.0	6.6	15.2	33.5
	45DFL	615 805 023 0	30	66.1	45	99.2	2.0	6.6	16.9	37.2
	60DFL	615 805 024 0	45	99.2	60	132.3	2.0	6.6	17.3	38.1
	75DFL	615 805 025 0	60	132.3	75	165.3	2.0	6.6	18.7	41.2
	90DFL	615 805 026 0	75	165.3	90	198.4	2.0	6.6	19.7	43.4
	100DFL	615 805 027 0	90	198.4	100	220.4	2.0	6.6	20.9	46.1
	115DFL	615 805 028 0	100	220.4	115	253.5	3.0	9.8	41.8	92.1
B	130DFL	615 805 029 0	115	253.5	130	286.6	3.0	9.8	43.2	95.2
	140DFL	615 805 030 0	130	286.6	140	308.6	3.0	9.8	44.6	98.3
	150DFL	615 805 031 0	140	308.6	150	330.7	3.0	9.8	46.0	101.4
	170DFL	615 805 032 0	150	330.7	170	374.8	3.0	9.8	46.4	102.3
	180DFL	615 805 033 0	170	374.8	180	396.8	3.0	9.8	46.7	102.9
	190DFL	615 805 034 0	180	396.8	190	418.9	3.0	9.8	47.0	103.6
	200DFL	615 805 035 0	190	418.9	200	440.9	3.0	9.8	47.3	104.2

Tool holsters

Desoutter Tool Holster - DTH42 - DTH-90

DTH-42

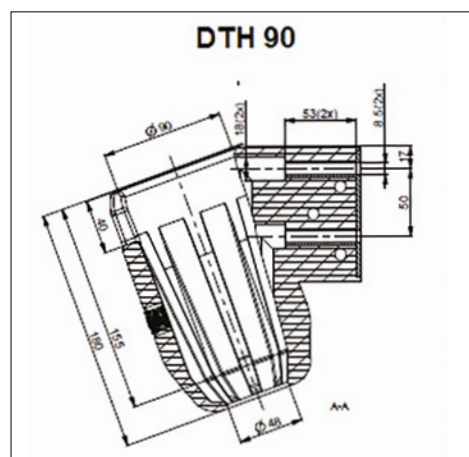
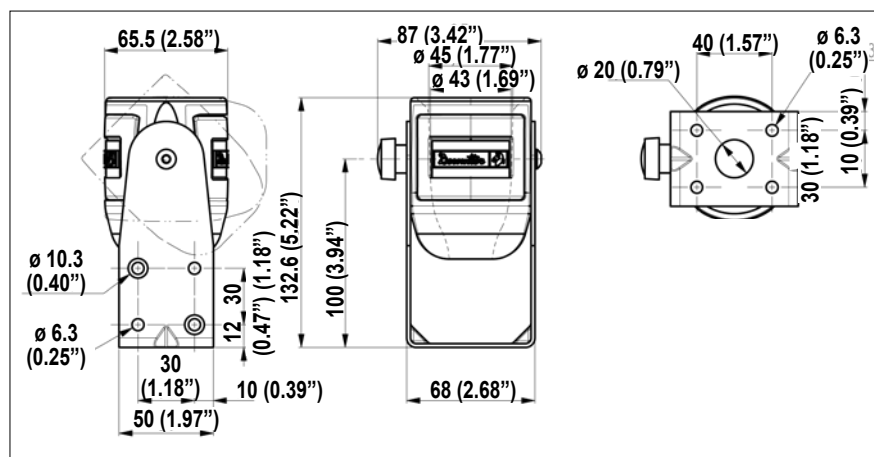
- Adapted for all **straight or pistol grip tools** with an outside diameter of maximum 42 mm
- The mounting plate can be fastened in **several positions** and the plastic ring angle can be set at **different angles**



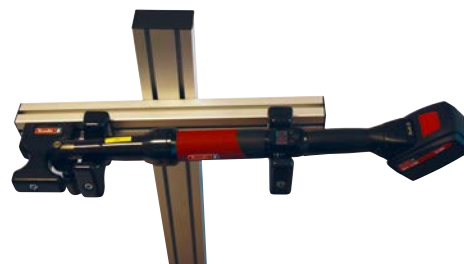
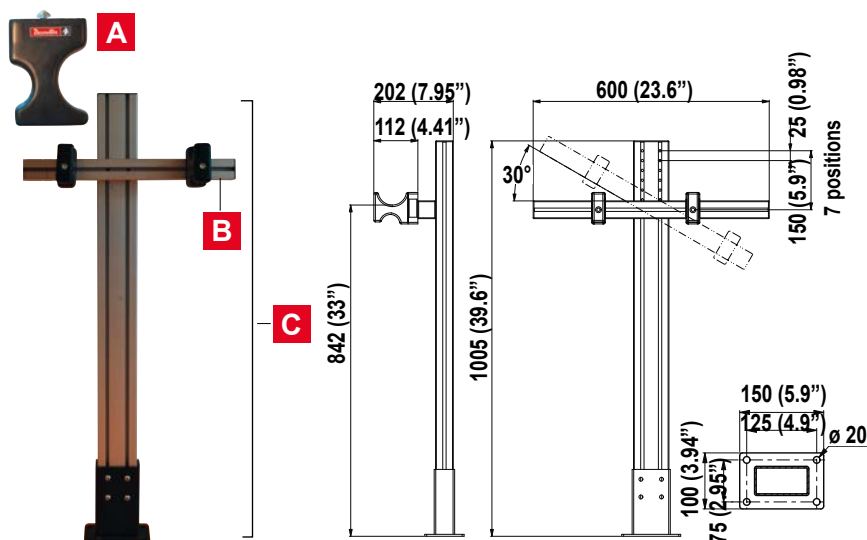
DTH-90

- Used for all **pistol grip tools** with an outside diameter of maximum 90 mm
- Designed with 2 holes for tool sensors presence
- Rubber material
- Mounting screws included

PIC REF	PART NUMBER	DESCRIPTION	MAX. DIAMETER	
			mm	in.
A	107 892	DTH-42	42	1.65
B	615 812 119 0	DTH-90	90	3.54



Desoutter Tool Holster - DTH TWIN



PIC REF	PART NUMBER	DESCRIPTION
A*	615 811 411 0	DTH TWIN (single) without rail
B	615 811 412 5	DTH TWIN rail KIT with 2 TWIN holders
C	615 811 413 5	DTH TWIN stand kit with base & 2 TWIN holders

* Includes screw and fixation for rail type Bosch 10mm slot



Desoutter RightWay focuses on six key areas that play an important part in the performance of your production lines.

■ PRODUCTIVITY

Remove bottlenecks to raise workstation productivity and overall line performance.

■ QUALITY

Improve the quality of final goods and reduce quality-related costs by implementing advanced error-proofing solutions that detect and fix defects at the workstation.

■ ERGONOMICS

Reduce work-related musculoskeletal disorders to improve operator morale, cut absenteeism and minimize operator turnover.

■ SAFETY

Fewer on-the-job injuries and the costs associated with lost time and medical costs.

■ ENERGY

Fight rising energy costs by adopting energy-efficient best practices and technologies.

■ PLANNING

Help you accelerate process improvement projects by providing your planning department with valuable resources and expertise.



Desoutter RightWay uses a unique **4-step methodology** to identify workable improvements to your production line. Our solutions combine real-world insights gathered directly from your production line with our unmatched expertise in tool systems for your industry.

ANALYSE ON THE FACTORY FLOOR

Desoutter RightWay begins with a 6-point on-site audit of your entire line, workstations and operator ergonomics. Our expert visits the line with you gathering information and observations about your requirements in the six key domains: productivity, quality, ergonomics, safety, energy consumption and process planning.

PROPOSE DEMONSTRATING FEASIBILITY

Using the results of our Desoutter RightWay audit, the data you provide and our best practices in similar applications, we design and test a custom solution that is perfectly suited to your requirements. In addition, we demonstrate the solution in real-world conditions to show you first-hand how it resolves your issues and concerns.

FOLLOW-UP IMPLEMENTATION AND SUPPORT

Finally, we work with your line engineers to organize the smooth and timely deployment of the new tool system. Over the life of the system, we will continue to monitor performance and use this feedback to make any adjustments that may be required as your line evolves. We also provide all the preventive maintenance and fixed-price servicing called for in the ROI calculations.

PROVE PROVE THE PAYBACK

Based on the proposed solution, we calculate the return on investment and the payback in terms of the six domains mentioned earlier. We also propose error-proofing solutions, calculate duty cycles and analyze joint quality for assembly applications.



More Than Productivity



www.desouttertools.com

ENG 615 993 934 1
© Copyright 2017

Printed in Europe - October 2017 - Issue 5